

INVENTORY
OF THE
BLUE RIDGE PARKWAY
ARCHIVES

Compiled by

Clifton Dale Foster

September 1990

Contract No. CX-5000-9-0046

**INVENTORY
OF THE
BLUE RIDGE PARKWAY ARCHIVES**

CONTENTS

INTRODUCTION	1
RECORD GROUP 1 RECORDS OF THE SUPERINTENDENT'S OFFICE	5
RECORD GROUP 2 RECORDS OF THE PUBLIC INFORMATION OFFICE	13
RECORD GROUP 3 RECORDS OF THE CONCESSIONS OFFICE	17
RECORD GROUP 4 RECORDS OF THE ASSISTANT SUPERINTENDENT'S OFFICE	24
RECORD GROUP 5 RECORDS OF THE DIVISION OF RESOURCE PLANNING AND PROFESSIONAL SERVICES	28
RECORD GROUP 6 OLD LAND ACQUISITION FILES	51
RECORD GROUP 7 RECORDS OF THE RESIDENT LANDSCAPE ARCHITECT	59
RECORD GROUP 8 RECORDS OF THE DIVISION OF ADMINISTRATION	77
RECORD GROUP 9 RECORDS OF THE DIVISION OF RESOURCE MANAGEMENT AND VISITOR SERVICES	79
RECORD GROUP 10 RECORDS OF THE UNIT AND DISTRICT RANGERS	87
RECORD GROUP 11 RECORDS OF THE INTERPRETATIVE SPECIALIST	89
RECORD GROUP 12 RECORDS OF THE DIVISION OF MAINTENANCE AND ENGINEERING	91
MANUSCRIPT COLLECTIONS	
R. GETTY BROWNING PAPERS	96
MOSES H. CONE PAPERS	99

INTRODUCTION

HISTORICAL BACKGROUND

Construction on a 470 mile road to link the Shenandoah National Park and the Great Smoky Mountains National Park following the crest of the Blue Ridge Mountains officially began in 1935. Conceived in the midst of the Great Depression, the road was designed to provide desperately needed employment for people of the region while at the same time creating a scenic and recreational marvel.

Planning and design of the road began as early as December 1933 when Stanley W. Abbott was appointed Resident Landscape Architect for the project by the National Park Service (NPS). Five months later, Edward H. Abbuehl and Hendrik E. Van Gelder joined Abbott to undertake reconnaissance and flagging duties. In 1935, Sam P. Weems joined the small staff as Project Manager with land acquisition and recreation development responsibilities.

The legislative act formally establishing the road as the Blue Ridge Parkway was passed by Congress on June 30, 1936, Public Law No. 848. Prior to that time, the route was referred to as the Appalachian Parkway and as the Shenandoah to Great Smoky Mountains National Parkway as well as various other names. Actual construction of the Parkway began when the first shovel of dirt was turned on September 11, 1935. The entire route was not completed until September 11, 1987 with the dedication of the Linn Cove Viaduct.

Stanley W. Abbott assumed the role of Acting Superintendent in 1937 with Weems becoming Assistant Superintendent a year later. On April 8, 1944, Sam Weems became Superintendent to oversee the increasing management responsibilities of the Parkway. Abbott remained as Resident Landscape Architect to oversee the technical phases of construction. Since that time, the Parkway has had only four other Superintendents: James W. Eden (1966-1968), Granville B. Liles (1968-1975), Joe Brown (1975-1977), and Gary E. Everhardt (1977-present).

THE BLUE RIDGE PARKWAY ARCHIVES

The Blue Ridge Parkway Archives was formed in October 1989 as the result of growing concern by Parkway administrators that much of the early documentation on the Parkway's history was in danger of being lost due to destruction and deterioration. The Archives' primary focus is on documenting the conception, development, construction, and management of the Parkway. As such, the collection contains documentation on the planning, design, and operation of the Parkway as well as records documenting the accomplishments of Parkway personnel.

50 years
to complete!

The Blue Ridge Parkway Archives is currently located at the Western Carolina University Extension Center in Asheville, North Carolina. Access to the collection can be obtained by contacting the Blue Ridge Parkway, 200 BB&T Building, Asheville, North Carolina 28801.

PROVENANCE

Records contained in the Blue Ridge Parkway Archives are primarily documents created or received by Parkway personnel in the performance of their official duties. The records were collected from the Parkway Headquarters in Asheville, North Carolina and from the various unit and district offices along the Parkway. Only two manuscript collections, the R. Getty Browning Papers and the Moses H. Cone Papers, are included. A variety of documentation is included in the collection including, correspondence, reports, maps, architectural and engineering drawings, photographs, and motion picture film.

The official records in the collection date primarily 1934-1988. Some photographs in the Records of the Interpretive Specialist (Record Group 11) date as early as 1932. Manuscripts in the Moses H. Cone Papers date 1891-1947. The collection comprises a total of 365 linear feet.

SCOPE AND CONTENT OF THE INVENTORY

This inventory describes the historical records held in the Blue Ridge Parkway Archives. The records are arranged and described by record group and record series in accordance with accepted archival practices regarding provenance and original order. In this inventory, a record group is defined as a collection of organizationally or functionally related records, usually from a particular department or office. A record series is a group of documents within a record group arranged in accordance with a particular filing system or maintained as a unit because they relate to a particular subject, function, or activity, or because they are a particular record type. Record groups, and series within groups, are numbered. A history of the administration and function of the department or office accompanies each record group description. This is followed by a brief summary of the record group's content and coverage. Series descriptions consist of a title, inclusive dates of records, volume, arrangement, location, and a brief narrative description of the series' contents which outlines the major types of records contained, major subjects included, and the function of the records. Related records found in other record groups or series are noted, as is the availability of indexes or other finding aids.

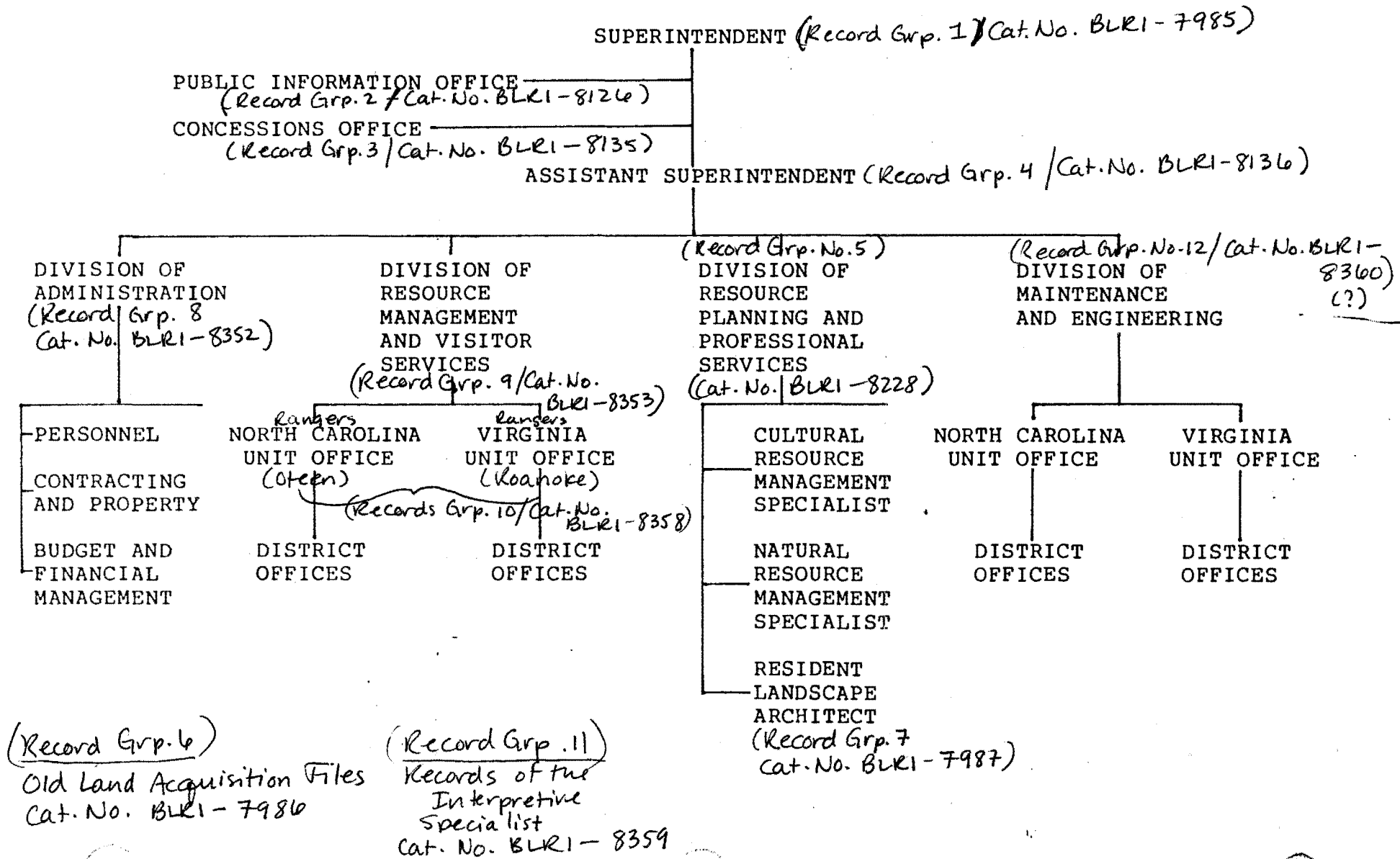
Original maps, drawings, photographs, and other items of particular significance are cataloged individually using the American National Cataloging System of the National Park Service. Full descriptions of these items are provided on the "Museum Catalog Record - Cultural Resources" available in the Archives. References to individually cataloged items are noted in the inventory.

Record group descriptions are arranged to reflect the hierarchical organization of the Blue Ridge Parkway. While this organizational structure has undergone several changes over the years, this inventory is organized according to the departmental structure that existed in December 1988. An organizational chart is provided in Figure 1. Record series descriptions are arranged in priority order and in general accordance with the filing scheme presented in Records Management Guideline (NPS-19), Release No. 2, Appendix A.

Abbreviations used in this inventory are as follows:

CA	Circa
CAT. NO.	Catalog Number
IN	Linear Inches
LF	Linear Feet
ND	Not Dated
NPS	National Park Service
RG	Record Group
VOL(S)	Bound Volume(s)

**FIGURE 1
ORGANIZATION OF THE BLUE RIDGE PARKWAY
1988**



RECORD GROUP 1

RECORDS OF THE SUPERINTENDENT'S OFFICE (CAT. NO. BLRI-7985)

The Superintendent serves as the chief management official of the Blue Ridge Parkway. In this capacity, the Superintendent plans, directs, and coordinates all park management programs, establishes overall park policies, supervises operating divisions, and develops long-range management objectives. The Superintendent has the final decision in matters related to the use of funds, materials, facilities, organizational structure, and personnel. The Superintendent also carries out a broad public information and public relations program, maintaining contact and cooperation with federal, state, and local government officials, members of Congress, and numerous groups and organizations. The Superintendent also oversees the land acquisition program of the Parkway and regulates concession operations. The Superintendent of the Blue Ridge Parkway is supervised by the Regional Director, Southeast Region, National Park Service.

Since its construction, the Parkway has had only six Superintendents: Stanley W. Abbott (acting, 1937-1944); Samuel P. Weems (1944-1966); James W. Eden (1966-1968); Granville B. Liles (1968-1975); Joe Brown (1975-1977); and Gary E. Everhardt (1977-present).

The records in this group contain information on the administration, organization, management, and activities of the Parkway. They document major organizational changes, special events, and the findings of special committees. Many of the records document the Parkway's interaction with other governmental agencies. Records relating to visits by notable individuals as well as public speeches of Superintendents are also included. The records date 1934-1988 and comprise 29 linear feet.

RECORD SERIES

SERIES 1 ADVISORY BOARD ON NATIONAL PARKS, HISTORIC SITES,
BUILDINGS, AND MONUMENTS. 1971-1972. 2 IN.

Letters, itinerary, and press clippings documenting the inspection visit of the advisory board during the summer of 1971. Dr. Durward Allen served as chairman. Mrs. Lyndon B. Johnson served on the committee. A copy of the board's final report is included.

Arranged chronologically.

Box 1.

RG 1: SUPERINTENDENT'S OFFICE

SERIES 2 SUPERINTENDENT'S MONTHLY NARRATIVE REPORT. 1951-1957,
1961-1963. 10 IN.

Copies of monthly reports submitted to the regional office. Reports describe important events which occurred in Park areas. Descriptions of special activities, construction projects, weather, visitor statistics, personnel changes, interpretive activities, planning projects, management actions, maintenance activities, and publicity are included.

Arranged chronologically.

Box 1-2.

SERIES 3 SUPERINTENDENT'S ANNUAL REPORT. 1984-1986. 3 IN.

Bound and unbound copies of the Superintendent's annual narrative report. Reports outline major events and accomplishments of the Parkway and provide statistical data on visitor use.

Arranged chronologically.

Box 3.

SERIES 4 MINUTES OF STAFF MEETINGS. 1965-1979, 1981-1984,
1986-1987. 9 IN.

Minutes of staff meetings involving the Superintendent, division chiefs, and district heads. Describes current Parkway activities, projects, and procedures. Meetings held irregularly.

Arranged chronologically.

Box 3-4.

SERIES 5 MINUTES OF VIRGINIA STAFF MEETINGS. 1974-1978. 2 IN.

Minutes of staff meetings held in the Virginia Unit Office involving Virginia staff. Describes current Parkway activities, projects, and procedures. Meetings held irregularly.

Arranged chronologically.

Box 5.

SERIES 6 SUPERINTENDENT'S SQUAD MEETING MINUTES. 1978-1979,
1982. 1 IN.

Highlights of meetings with squad leaders. Describes activities of squad leaders and their departments.

Arranged chronologically.

Box 5.

SERIES 7 MEMORANDUMS OF AGREEMENT WITH FEDERAL, STATE, AND
LOCAL AGENCIES. 1945-1978, 1987. 9 IN.

Agreements between Parkway officials and various federal, state, and local government agencies and organizations concerning

RG 1: SUPERINTENDENT'S OFFICE

hunting, fire control, hunter parking, joint construction projects, camping, festivals, law enforcement, and the North Carolina Mountain Experience Center. Also includes memos and correspondence regarding agreements.

Arranged chronologically.
Box 5-6.

SERIES 8 A GUIDE TO RADIO COMMUNICATIONS. 1955. 0.5 IN.

Eight page guide to familiarize Parkway personnel with instructions and operating procedures for operation of FM radio communication on Parkway. Two copies of the guide are included.

Box 7.

SERIES 9 OPERATIONS EVALUATION REPORT. 1973-1974. 1 IN.

Copy of the Operations Evaluation Report of Blue Ridge Parkway completed in November 1974. The report gives an overview of operations and management of the Parkway, describes condition of the Parkway, and makes specific recommendations for improvement. Also included in this series is Superintendent Liles' response to the recommendations.

Arranged chronologically.
Box 7.

SERIES 10 CONGRESSIONAL INSPECTION COMMITTEES. 1938-1968. 2 IN.

Correspondence with various congressmen, including North Carolina Congressman Roy A. Taylor, regarding visits to the Parkway by individual congressmen and congressional committees. Newspaper clippings describing congressional visits are included. Also included are statements to the Public Land Law Review Commission. Many of the documents relate to a visit by Senator Claude Pepper (1947) and various visits by Congressman Robert L. Doughton.

Arranged chronologically.
Box 7.

SERIES 11 VISITS - MRS. LYNDON B. JOHNSON. 1965. 1 IN.

Correspondence, itinerary, and newspaper clippings describing visit of Mrs. Lyndon B. Johnson, Mrs. Robert S. McNamara and Secretary of the Interior Stewart Udall to the Parkway. Also includes transcript of a speech delivered by Chief Naturalist Robinson at Peaks of Otter ceremony.

Arranged chronologically.
Box 7.

RG 1: SUPERINTENDENT'S OFFICE

SERIES 12 VISITS - JOHN D. ROCKEFELLER, JR. 1950. 1 IN.

Correspondence with John D. Rockefeller, Jr. and others concerning Mr. Rockefeller's visit to the Parkway.
Arranged chronologically.
Box 7.

SERIES 13 VISITS - SECRETARY CECIL D. ANDRUS. 1978. 0.5 IN.

Correspondence and itinerary concerning the visit of Secretary of the Interior Cecil D. Andrus to the Parkway on August 8, 1978.
Arranged chronologically.
Box 7.

SERIES 14 ORGANIZATION. 1967-1979, 1987. 6 IN.

Correspondence and reports regarding reorganization, staffing changes, realignment of personnel positions, changing of district lines, and the move of the Parkway Headquarters from Roanoke, Virginia to Asheville, North Carolina. Organizational charts are included. Also includes an agreement with labor unions. See also Series 19.
Arranged chronologically.
Box 8.

SERIES 15 ORGANIZATION - LISTS AND DIRECTORIES. 1956-1979.
2 IN.

Contains employee telephone lists and National Park Service Directory information lists which give names of Parkway personnel and their positions. Also includes concession directories and lists of retirees from the Parkway.
Arranged chronologically.
Box 9.

SERIES 16 ORGANIZATION - GOALS AND MISSION STATEMENTS.
1965-1979. 4 IN.

Copies of progress reports on fiscal year goals submitted to the regional office. Reports list goals and progress made toward completion of goals. Also includes goals reports from unit offices and divisions submitted to the Superintendent. Management information system data, statements for management, and organizational charts are included in this series.
Arranged chronologically.
Box 9.

RG 1: SUPERINTENDENT'S OFFICE

SERIES 17 ORGANIZATION - FIELD OFFICES. 1951-1969, 1971-1976.
6 IN.

Correspondence, memos, and reports concerning management responsibilities of Parkway unit and district offices as well as the cluster management area for the Blue Ridge Parkway. Includes material on the management of the Heintooga area. Organizational charts are also included. See also Series 18.

Arranged chronologically.
Box 10.

SERIES 18 ORGANIZATION - FIELD OPERATIONS STUDY TEAM (FOST).
1966-1975. 2 IN.

Correspondence and reports concerning the 1970 reorganization of Parkway management into units (North Carolina and Virginia) and cluster management operations whereby the Blue Ridge Parkway Superintendent had supervisory management responsibilities over four other historical areas of the National Park Service. These changes were brought about as a result of the 1966 FOST report. A copy of the report is included in this series. Organizational charts are also included. See also Series 17.

Arranged chronologically.
Box 11.

SERIES 19 ORGANIZATION - REALIGNMENT. 1976. 1 IN.

Correspondence and memos concerning reorganization of Parkway management and realignment of employee duties. Memos to employees advising them of new duties are included. Organizational charts are also included. See also Series 14.

Arranged chronologically.
Box 11.

SERIES 20 RECORDS SCHEDULING AND DISPOSITION RECORDS. 1962-1971.
1 IN.

Correspondence, memos, and forms regarding records scheduling, transfer, and disposal. Publication NPS-19 states that parks should retain all FRC records transmittal forms, inventory forms, and records scheduling and disposition cards.

Arranged chronologically.
Box 11.

SERIES 21 PROTECTION - FLOODS AND STORMS. 1955-1977. 1 IN.

Correspondence and reports concerning flood and storm damage along the Parkway and efforts to clean up destruction.

Arranged chronologically.
Box 11.

RG 1: SUPERINTENDENT'S OFFICE

SERIES 22 PROTECTION - BUILDING FIRES. 1963-1971. 1 IN.

Correspondence and reports concerning fires in Parkway buildings. Major subjects include fire inspections, alarm system installation, and fire loss reports.

Arranged chronologically.

Box 11.

SERIES 23 SPECIAL EVENTS. 1951-1987. 10 LF.

Correspondence, memos, itinerary, programs, brochures, news releases, speeches, news clippings, and invitations concerning special events along the Parkway. Included are files on: Dedication of Soco Gap Section of Parkway (1951); Doughton Park Dedication (1953); Twentieth Anniversary Celebration (1956); Dedication of Parkway Between Wolf Laurel Gap and the Great Smoky Mountains National Park (1959); James River Bridge Dedication (1960); 25th Anniversary of Blue Ridge Parkway (1961); Dedication of Blue Ridge Parkway in Virginia (1965); Asheville By-Pass Dedication (1967); E.B. Jeffress Park Dedication (1968); Dedication of Land for Final Link of Parkway - Grandfather Mountain (1968); Ten Millionth Visitor (1968); Dedication of Rufus L. Gwynn Memorial Site (1969); Browning Knob Dedication (1970); National Park Service Centennial (1972); Dedication of Roanoke Campsites and Handitrail for the Handicapped (1972); Asheville Headquarters Open House (1972); Abbott Lake Dedication (1978); Folk Art Center Groundbreaking and Dedication (1977 & 1980); Linn Cove Viaduct Awards Ceremony (1984); Dedication of Roy Taylor Overlook and Forest (1984); Dedication '87 (1987). Files contain information on the history of the site or ceremony. Some files contain biographical information on the person being honored.

Arranged chronologically.

Box 12-13.

SERIES 24 SPECIAL EVENTS - 50TH ANNIVERSARY CELEBRATION.
1983-1986. 1 LF.

Correspondence, status reports, speeches, newspaper clippings, and copies of programs regarding the 50th Anniversary Celebration of the Blue Ridge Parkway. Much of the correspondence and reports concern planning of events. Includes some correspondence with Mrs. Lyndon B. Johnson. A copy of the final report on the celebration is also included. See also RG 2 Series 2.

Arranged chronologically.

Box 14-15.

RG 1: SUPERINTENDENT'S OFFICE

SERIES 25 SPEECHES. 1960-1968, 1972-1975, 1978-1979. 3 IN.

Copies of speeches made by superintendents, regional directors, and others regarding the history, development, and activities of the Parkway. Some of the more significant speeches include Sam Weems' speech before the Aichi Prefectural Government and the National Parks Bureau in Tokyo (1967), Sam Weems' speech at the International Recreation Association in Japan (1964), numerous speeches by Granville Liles to local business and civic organizations, and Gary Everhardt's speech to the Appalachian Trail Conference.

Arranged chronologically.
Box 16.

SERIES 26 NEWS RELEASES. 1980-1982, 1984-1985, 1987. 3 IN.

Official Parkway news releases regarding public meetings to discuss land acquisitions, Parkway services and facilities, projects and programs, anniversary and dedication ceremonies, road closings, contract awards for Parkway construction, Parkway visitation statistics, and various other subjects. See also RG 9 Series 14.

Arranged chronologically.
Box 16.

SERIES 27 COOPERATING ASSOCIATIONS - EASTERN NATIONAL PARK AND MONUMENT ASSOCIATION. 1964-1977, 1979-1987. 3 LF.

Correspondence with the Superintendent and Eastern National representatives concerning activities of Eastern National along the Parkway including financial matters, Eastern National operations, and the relationship between Eastern National activities and employees with the Parkway. Some correspondence relate to requests for annual Parkway donations to Eastern National. Copies of Eastern National's newsletters and reports are also included.

Arranged chronologically.
Box 17-22.

SERIES 28 RESOLUTIONS AND STATEMENTS. 1934, 1939, 1948, 1950, 1952, 1954-1955, 1957-1958, 1961-1963, 1965, 1967.
1 LF.

This series includes the following: Resolutions from the Asheville Chamber of Commerce concerning entrance fees to Parkway areas; Copy of The North Carolina-Georgia Extension of the Blue Ridge Parkway: A Report to the Congress of the United States, by the Office of the Secretary of the Interior, June 1963 (Cat. No. BLRI-8133); Statements from Hugh Morton regarding Parkway passage around Grandfather Mountain; Report on the economic effects of

RG 1: SUPERINTENDENT'S OFFICE

the Blue Ridge Parkway (1962); Statements from congressional representatives as well as statements to congressional committees concerning the Parkway; Statements regarding the passage of HR 11172 concerning the establishment of entrance fees for National Park Service areas; Statements concerning concession facilities on the Parkway; Resolutions issued by the Blue Ridge Parkway Association; Transcript of a public hearing of the North Carolina National Park, Parkway, and Forests Development Commission (1957); Copy of Description Of A Route Through North Carolina Proposed As A Part Of The Scenic Parkway To Connect The Shenandoah National Park With The Great Smoky Mountains National Park, submitted by the North Carolina Committee on Federal Parkways, 1934 (Cat. No. BLRI-8134).

Arranged chronologically.

Box 23-24.

SERIES 29 NATIONAL PRIORITIES - NATIONAL DEFENSE PERMITS TO USE PARKWAY. 1951, 1953-1962, 1965. 3 IN.

Correspondence regarding use of the Parkway and Park areas by armed forces and by Department of Defense contractors for training, maneuvers, testing, and transportation.

Arranged chronologically.

Box 25.

SERIES 30 GOVERNMENT DEPARTMENTS AND AGENCIES. 1957, 1959, 1962-1965, 1967, 1971, 1973. 3 IN.

Correspondence with other government departments and agencies concerning use of the Parkway. Includes correspondence on a management plan with the U.S. Forest Service. Also includes correspondence on use of the Parkway by the U.S. Geological Survey and the U.S. Coast and Geodetic Survey.

Arranged chronologically.

Box 25.

SERIES 31 LETTERS SENT. 1986-1988. 16.5 LF.

Carbon copies on pink paper of letters and memoranda sent from the various administrative offices of the Blue Ridge Parkway. Included are letters sent to private individuals, government officials, and concessioners. Memoranda to/from Parkway personnel are also included. Occasional meeting notes from staff meetings are included as well. These letters provide a daily chronological account of the activities of the Blue Ridge Parkway's administrative offices.

Arranged chronologically.

Box 26-58.

RECORD GROUP 2

RECORDS OF THE PUBLIC INFORMATION OFFICE (CAT. NO. BLRI-8126)

The Public Information Office is administered by the Public Information Officer of the Blue Ridge Parkway. The office was officially established in 1984 with Jim Ryan serving as the first Public Information Officer. The Public Information Officer serves as the principal assistant to the Superintendent regarding the preparation of public communications and information. In this capacity, the Public Information Officer prepares communications explaining Park policies, regulations, and guidelines; reviews information released on matters relating to special uses, visitor services, and cooperative ventures with other agencies; represents the Superintendent in public meetings and negotiations with representatives of the National Park Service and other government agencies; in conjunction with the landscape architect, prepares studies for program priorities and planning; makes public presentations using movies, slides, and other visual aids to further the understanding of the Parkway and the National Park Service; and assists division supervisors on the interpretation and application of Park policies and regulations.

The records in this group relate primarily to the various special anniversary events of the Parkway including the Golden Anniversary Celebration and Dedication '87. The records in this group total eight linear feet and date 1983-1987.

RECORD SERIES

SERIES 1 GOLDEN ANNIVERSARY COMMITTEE MINUTES. 1983-1985.
3 IN.

Agendas and minutes from the Golden Anniversary Committee, established to plan and implement events in celebration of the Parkway's 50th Anniversary. Occasional correspondence are included.

Arranged chronologically.
Box 1.

SERIES 2 GOLDEN ANNIVERSARY CELEBRATION - EVENTS. 1984-1985.
3 IN.

Correspondence, brochures, and news clippings regarding events in celebration of the Parkway's 50th Anniversary including events planning. Besides the events noted below, activities included a U.S. Postal Service stamp cancellation and a salute to the Parkway and its pioneers. See also RG 1 Series 24.

RG 2: PUBLIC INFORMATION OFFICE

Records are arranged in the following order: Cumberland Knob Program; Conference on the Blue Ridge Parkway: Agent of Transition; American Society of Landscape Architects/American Society of Civil Engineers Program; Anniversary Videotape Script; Asheville Celebration; Bicycle Race/Race Across America; Blue Ridge Parkway: The First 50 Years, by Harley Jolley (Cat. No. BLRI-8124).

Box 1.

SERIES 3 SPEECHES - GOLDEN ANNIVERSARY CELEBRATION. 1985.
1 IN.

Transcripts of speeches presented by Superintendent Gary Everhardt, Virginia Governor Charles Robb, National Park Service Director Bill Mott, and others at various events for the 50th Anniversary Celebration.

Arranged by event.

Box 2.

SERIES 4 PARKWAY VETERANS. 1983-1986. 2 IN.

Correspondence and completed biographical questionnaires from former workers on the Blue Ridge Parkway. Correspondence and questionnaires describe the work performed by the individual and offer valuable information concerning the construction of the Parkway. Copies of news releases requesting former workers to write the Parkway headquarters and lists of National Park Service retirees who worked on the Parkway are also included. For additional biographical information on Parkway employees, see also RG 5 Series 38. For photographs of Parkway employees, see RG 11 Series 3.

Arranged chronologically.

Box 2.

SERIES 5 JAMES RIVER BRIDGE DEDICATION - GUEST REGISTER.
SEPTEMBER 10, 1985. 1 VOL. 3 IN.

Bound volume of signatures of guests attending the James River Bridge Dedication on September 10, 1985.

Box 2.

SERIES 6 ALBUM - GOLDEN ANNIVERSARY CELEBRATION. 1985.
3 VOLS. 1.5 LF. (CAT. NO. BLRI-8125)

Loose-leaf binders of photographs, news clippings, letters, program itineraries, and brochures documenting the activities of the Golden Anniversary Celebration at Cumberland Knob, North Carolina and at Roanoke and James River, Virginia.

Arranged by event.

Box 3-5.

RG 2: PUBLIC INFORMATION OFFICE

SERIES 7 DEDICATION '87 - GENERAL CORRESPONDENCE. 1985-1987.
3 IN.

Correspondence, itinerary, news releases, and general information on the Parkway for release to the press regarding the dedication of the final link of the Blue Ridge Parkway. Some of the correspondence concern use of MacRae Meadows as the site for the formal dedication activities. Also includes a lease agreement between Grandfather Mountain, Inc. and the Blue Ridge Parkway Dedication '87 Committee for use of MacRae Meadows.

Arranged chronologically.

Box 6.

SERIES 8 DEDICATION '87 COMMITTEE MINUTES. 1986-1987.
3 IN.

Minutes of the Dedication '87 Committee meetings held in various locations in Virginia and North Carolina. Minutes describe efforts to plan and promote Dedication '87 and the Grand Opening of the Blue Ridge Parkway. Correspondence with committee members are also included.

Arranged chronologically.

Box 6.

SERIES 9 RESOLUTIONS - DEDICATION '87. 1987. 1.5 LF.

Copies of resolutions passed by various county boards of commissioners and municipal governments commemorating the dedication of the Blue Ridge Parkway. Correspondence accompany some resolutions.

Arranged chronologically.

Box 7.

SERIES 10 DEDICATION '87 - EVENTS. 1985-1988. 6 IN.

Correspondence, memos, and news clippings concerning actual or proposed events in connection with Dedication '87. Includes correspondence, budget information, and contracts with performers for the Rocky Knob Music Festival. Also includes correspondence and telegrams concerning the naval vessel USS Blue Ridge.

Records are arranged in the following order: Rocky Knob Music Festival; Symposium on Parkways; Time Capsule; USS Blue Ridge Correspondence; Presidential Visit; Roanoke Valley Heritage Festival.

Box 8.

RG 2: PUBLIC INFORMATION OFFICE

SERIES 11 DEDICATION '87 - NEWS CLIPPINGS. 1987. 1.5 LF.

News clippings and copies of articles from numerous newspapers and magazines regarding Dedication '87 activities and the history of the Blue Ridge Parkway.

Not arranged.

Box 9.

SERIES 12 GOLDEN ANNIVERSARY CELEBRATION - GUEST REGISTER.
September 11, 1985. 1 VOL. 1.5 LF.

Loose-leaf binder of signatures of guests attending the Golden Anniversary Celebration on September 11, 1985.

Box 10.

RECORD GROUP 3

RECORDS OF THE CONCESSIONS OFFICE (CAT. NO. BLRI-8135)

The Concessions Office is administered by the Concessions Specialist under the supervision of the Superintendent. The Concessions Specialist is the primary staff assistant and advisor to the Superintendent regarding concession matters and provides technical assistance to the Superintendents of the Great Smoky Mountain National Park and Mammoth Cave National Park as well as assistance to Big South Fork National River and Recreation Area and the Chief, Division of Concessions, Southeast Regional Office of the National Park Service. The Concessions Specialist is primarily responsible for the overall effectiveness of the various Parkway concessions management programs including planning, operations, contracting, and financial matters.

National Park Concessions, Inc. was the first concessioner authorized to operate on the Blue Ridge Parkway. The first facility, a sandwich shop at Cumberland Knob, was opened in 1942. Virginia Peaks of Otter Company, another major concessioner, opened its first operation along the Parkway in 1950.

The records in this group document concessioner activities along the Parkway and the interaction between Parkway personnel and concessioners. The group contains records consisting primarily of correspondence, contracts, and reports on concessioner operations. Records in this group date 1937-1985 and total 55 linear feet.

RECORD SERIES

SERIES 1 GENERAL CORRESPONDENCE. 1951-1971, 1978-1984. 1.5 LF.

Correspondence and memorandums, primarily from the Superintendent, regarding general administration, duties, and policies of the Parkway and the Concessions Office relating to concessions operations. Also correspondence regarding committees on which the Concessions Specialist served as a member. Some letters from concessioners are included. Freedom of Information requests are also included.

Arranged chronologically.

Box 1-3.

RECORD GROUP 3

RECORDS OF THE CONCESSIONS OFFICE (CAT. NO. BLRI-8135)

The Concessions Office is administered by the Concessions Specialist under the supervision of the Superintendent. The Concessions Specialist is the primary staff assistant and advisor to the Superintendent regarding concession matters and provides technical assistance to the Superintendents of the Great Smoky Mountain National Park and Mammoth Cave National Park as well as assistance to Big South Fork National River and Recreation Area and the Chief, Division of Concessions, Southeast Regional Office of the National Park Service. The Concessions Specialist is primarily responsible for the overall effectiveness of the various Parkway concessions management programs including planning, operations, contracting, and financial matters.

National Park Concessions, Inc. was the first concessioner authorized to operate on the Blue Ridge Parkway. The first facility, a sandwich shop at Cumberland Knob, was opened in 1942. Virginia Peaks of Otter Company, another major concessioner, opened its first operation along the Parkway in 1950.

The records in this group document concessioner activities along the Parkway and the interaction between Parkway personnel and concessioners. The group contains records consisting primarily of correspondence, contracts, and reports on concessioner operations. Records in this group date 1937-1985 and total 55 linear feet.

RECORD SERIES

SERIES 1 GENERAL CORRESPONDENCE. 1951-1971, 1978-1984. 1.5 LF.

Correspondence and memorandums, primarily from the Superintendent, regarding general administration, duties, and policies of the Parkway and the Concessions Office relating to concessions operations. Also correspondence regarding committees on which the Concessions Specialist served as a member. Some letters from concessioners are included. Freedom of Information requests are also included.

Arranged chronologically.
Box 1-3.

RG 3: CONCESSIONS OFFICE

SERIES 2 CORRESPONDENCE REGARDING CONCESSIONERS. 1960, 1968, 1972-1984. 2 LF.

Correspondence regarding concessioner permits, concessioner financial reports, concession operations, concessioner's bills, evaluations of concessions, collection of franchise fees, insurance, and commercial use licenses. Most correspondence are between the Superintendent and concessioners. Some correspondence concern complaints against concession operations.

Records are arranged alphabetically by name of concessioner in the following order: Baker, Betty L. (1972-1973); Brinegar Cabin (1973-1982); Brogan, Richard (1972-1974); Clark, S.S., Jr. (1972-1980); Crafts of Nine States (1972-1982); National Park Concessioners, Inc. (1972-1984); New River Outfitters, Inc. (1982); Northwest Trading Post, Inc. (1972-1983); Pisgah Inn, Inc. (1972-1983); Rutledge, Jason (1972-1983); Virginia Peaks of Otter Co. (1960, 1968, 1972-1982).

Box 4-7.

SERIES 3 ACCOMMODATIONS. 1964-1974, 1978-1984. 6 IN.

Correspondence with individuals inquiring about accommodations along the Parkway. Some correspondence regard availability of accommodations, complaints, rates, reservations, operations, and facilities, including capacity and type of food and lodging accommodations. Correspondence regarding concessions directories and copies of directories are also included.

Arranged chronologically.

Box 8.

SERIES 4 REPORTS - GENERAL. 1970-1980, 1982-1984. 1 IN.

Completed food service establishment inspection reports and environmental health surveys of concession operations. Correspondence concerning concession reports are also included.

Arranged chronologically.

Box 9.

SERIES 5 REPORTS - ANNUAL. 1972-1981. 2.5 LF.

Correspondence and copies of reports, including annual financial reports, food service establishment inspection reports, concessioner evaluations, reports on contract compliance, and maintenance inspection reports. Much of the correspondence is with concessioners and the Southeast Regional Office of the National Park Service.

Arranged chronologically by year with many correspondence and reports grouped by concessioner.

Box 9-13.

RG 3: CONCESSIONS OFFICE

SERIES 6 AUDITS AND FISCAL REPORTS. 1959-1984. 2 LF.

Correspondence between Parkway officials and concession owners regarding financial reports, problems with audits, and franchise fees. Copies of concessioners' annual financial reports, audit reports, and copies of agreements between the Blue Ridge Parkway and various concessioners are included. Copies of certified letters to concessioners are also included.

Records are arranged in the following order: General (1960-1982); Brinegar Cabin (1959-1971, 1982); Cherry Hill Coffee Shop (1960-1968); Crafts of Nine States (1982-1983); Folk Art Center (1982-1984); National Park Concessioners, Inc. (1971-1977, 1980-1982); Northwest Trading Post, Inc. (1961-1973, 1982); Parkway Inn (1982); Pisgah Inn, Inc. (1964-1968, 1971, 1980-1981); Rutledge, Jason (1982); Virginia Peaks of Otter Co. (1962-1972, 1981-1982).

Box 14-17.

SERIES 7 CONCESSIONER'S MEETINGS. 1953-1965, 1968, 1970-1984.
1.5 LF.

Correspondence from the Superintendent, Concessions Specialist, and concessioners regarding concessioner's meetings. Meetings were held to discuss training status of concession personnel, policies, procedures, operations, and problems. Minutes of annual concessioner's meetings are also included.

Arranged chronologically.

Box 18-20.

SERIES 8 CONCESSIONS ADMINISTRATION. 1971-1975, 1977-1984.
1.5 LF.

Copies of certified letters to concessioners regarding the preparation of annual financial reports. Other correspondence relate to the management of the concessions evaluation program. Copies of concessioners' annual overall evaluations are included. Records regarding the sale of Pisgah Inn, Inc. are also included.

Arranged chronologically.

Box 21-23.

SERIES 9 CONCESSIONS APPLICATIONS. 1953-1970, 1972-1975, 1978,
1980-1983. 1 LF.

Correspondence with individuals regarding the operation of concessions along the Parkway. Also correspondence with the Southeast Regional Office of the National Park Service regarding potential concessioners.

Arranged chronologically.

Box 24-25.

RG 3: CONCESSIONS OFFICE

SERIES 10 CONCESSIONS APPLICATIONS - NORTHERN PARKWAY.
1955-1958. 6 IN.

Correspondence with prospective concessioners and government officials regarding concessions operations along the Parkway from the Shenandoah National Park to Roanoke, Virginia. Requests for bids, proposals from concessioners, and applications in response to requests for bids are also included.

Arranged chronologically.
Box 26.

SERIES 11 CONCESSIONS APPLICATIONS - SOUTHERN PARKWAY.
1959-1962. 6 IN.

Correspondence with prospective concessioners and government officials regarding concessions operations along the Parkway from Roanoke, Virginia to Asheville, North Carolina. Requests for bids, proposals from concessioners, and applications in response to requests for bids are included. A financial statement and a copy of a proposal by the Blue Ridge Parkway Company are also included.

Arranged chronologically.
Box 27.

SERIES 12 CONTRACTS AND PERMITS. 1948-1985. 21 LF.

Correspondence with concessioners concerning contracts, permits, proposals, and concession operations. Some correspondence concern the expansion or alteration of concession services. Copies of concession permits, deeds, deeds of release, fact sheets, cooperative agreements, and bank checks from concessioners are also included.

Records are arranged in the following order: General (1948-1984); Brinegar Cabin (1956-1984); Campgrounds (1980-1984); Cherry Hill Coffee Shop (1960-1974); Clark, S.S. (1970-1981); Crafts of Nine States (1951-1984); Folk Art Center (1974-1977); Grayline Tours (1969-1974); Harris, Homer (1958-1977); National Park Concessioners, Inc. (1961, 1964-1985); Northwest Trading Post, Inc. (1957-1984); Pisgah Inn, Inc. (1951-1984); Rutledge, Jason (1978-1983); Virginia Peaks of Otter Co. (1948-1984).

Box 28-69.

RG 3: CONCESSIONS OFFICE

SERIES 13 EMPLOYMENT AND LABOR. 1948-1984. 1 LF.

Correspondence regarding equal employment programs, affirmative action programs, and handicapped employment programs of concessioners. Correspondence regarding employee hirings, dismissals, and employee incidents are included. Job descriptions for positions with concessioners are also included.

Arranged chronologically.
Box 70-71.

SERIES 14 MERCHANDISING. 1942, 1944-1945, 1948, 1950-1953, 1959-1984. 1 LF.

Primarily correspondence regarding the regulation of sale items by concessioners, prohibition of the sale of certain items, and employee discounts at Parkway concessions. Some correspondence deal with the consideration of items for sale along the Parkway and with handicraft, gift, and merchandise policies.

Arranged chronologically.
Box 72-73.

SERIES 15 RATES. 1950-1984. 7 LF.

Primarily correspondence regarding rates for lodging, food, gas, and other goods and services offered by concessioners along the Parkway. Many correspondence deal with the approval of rate and price increases. Copies of menus from Parkway concessioners and private restaurants are also included.

Records are arranged in the following order: General (1950-1984); Brinegar Cabin (1960-1979); Cherry Hill Coffee Shop (1960-1967); Crafts of Nine States (1951-1979); National Park Concessioners, Inc. (1950-1984); Northwest Trading Post, Inc. (1959-1984); Pisgah Inn, Inc. (1963-1984); Rutledge, Jason (1978-1981); Virginia Peaks of Otter Co. (1959-1984).

Box 74-87.

SERIES 16 BUILDINGS AND OTHER FACILITIES. 1937-1984. 6.5 LF.

Primarily correspondence regarding the development and use of buildings and facilities, concession development plans, and progress reports on projects. Also includes correspondence regarding drawings for Pisgah Inn and additions, modifications, and expansion of buildings at Peaks of Otter.

Records are arranged in the following order: General (1937-1984); Bluffs Concession Buildings (1938-1952); Brinegar Cabin (1971-1984); Cherry Hill Coffee Shop (1960-1961); Clark, S.S., Jr. (1972); Crabtree Meadows Concession Buildings (1947-1950); Crafts of Nine States (1954-1984); Cumberland Knob Concession Buildings (1936-1949); National Park Concessioners, Inc. (1953-

RG 3: CONCESSIONS OFFICE

1984); Northwest Trading Post, Inc. (1958-1984); Pisgah Inn, Inc. (1963-1984); Rocky Knob Concession Buildings (1947-1950); Virginia Peaks of Otter Co. (1941-1984); Whetstone Ridge Concession Buildings (1949).

Box 88-100.

SERIES 17 PROTESTS AGAINST FURTHER CONCESSION DEVELOPMENT.
1948-1950, 1955-1958. 1.5 LF.

Letters from state and local government agencies, various organizations, individuals, congressional representatives, and tourists associations in protest of further concession development along the Blue Ridge Parkway. Many letters are in response to a National Park Service call for public discussion on proposals to construct additional tourist concessions along the Parkway. Also includes many newspaper clippings regarding this issue.

Arranged chronologically.
Box 101-103.

SERIES 18 SANITATION MATTERS. 1966-1984. 2.5 LF.

Correspondence regarding sanitation at Parkway concessions. Also includes inspection reports and copies of health regulations.

Records are arranged in the following order: General (1966-1984); National Park Concessioners, Inc. (1980-1983); Northwest Trading Post, Inc. (1980, 1982); Pisgah Inn, Inc. (1980, 1982-1983); Rutledge, Jason (1980, 1982); Virginia Peaks of Otter Co. (1980-1983).

Box 104-108.

SERIES 19 SANITATION REPORTS. 1973, 1975-1978. 6 IN.

Primarily food service establishment inspection reports on Parkway concessions. Includes checklists of inspection items signed by health authorities. Some reports have additional inspection forms or memorandums attached. Occasional correspondence regarding inspection appointments and schedules are also included.

Arranged chronologically.
Box 109.

SERIES 20 ECONOMIC ANALYSIS OF NATIONAL PARK CONCESSIONS, INC.
OPERATIONS. 1980-1981. 6 IN.

Drafts and a final report on "Economic Analysis of Concessions Operations at Big Bend National Park, Blue Ridge Parkway, Isle Royale National Park, Mammoth Cave National Park, Olympic National Park," by Frank Osgood Associates, Inc. dated March 1981 (Cat. No. BLRI-8128). The report identifies operational changes to increase revenues, decrease costs, and provide better visitor services. The report also assesses the economic feasibility of concessioner implemented corrections for life and safety deficiencies and other facility improvements desired by the National Park Service. Some correspondence are also included.

Arranged chronologically.

Box 110.

RECORD GROUP 4

RECORDS OF THE ASSISTANT SUPERINTENDENT'S OFFICE
(CAT. NO. BLRI-8136)

The Assistant Superintendent serves as the principal advisor to the Superintendent, acts as the Superintendent's assistant in operational matters, and exercises supervisory authority over the Parkway's four division chiefs. Through the divisional lines of authority, the Assistant Superintendent is responsible for managing the Parkway's day-to-day operations. In addition, the Assistant Superintendent formulates policies and advises the Superintendent in matters of policy, programs, and planning to assure maximum utilization of park resources while maintaining cost efficiency. The Assistant Superintendent represents the Parkway in contracts and negotiations with other government entities, developers, landowners, concessioners, and organizations and individuals interested in the programs of the Parkway. Unless directed otherwise, the Assistant Superintendent has the full authority of the Superintendent to make decisions and commitments in his behalf. The Assistant Superintendent is responsible for providing management and organizational guidance on matters related to the Parkway or the National Park Service. The Assistant Superintendent also has responsibility for labor management relations, including equal opportunity, and acts as the administrative officer for the Youth Conservation Corps (YCC) and the Young Adult Conservation Corps (YACC) employment programs.

The records in this group include documentation produced in a Service-wide Administrative Sub-Task Force management study in which Assistant Superintendent Ray Brotherton was involved. Also included in this record group are contracts and program materials related to YCC and YACC activities on the Blue Ridge Parkway. Series 5 and Series 6 document union contract negotiations with Local R4-75 of the National Association of Government Employees and Local 3758 of the American Federation of Government Employees respectively. It should be noted that the majority of records created in the day-to-day activities of the Assistant Superintendent's Office are integrated into the central files of the four major administrative division offices. The records of the Assistant Superintendent's Office comprise 12.5 linear feet and are dated 1971-1988.

RG 4: ASSISTANT SUPERINTENDENT'S OFFICE

RECORD SERIES

SERIES 1 ADMINISTRATIVE SUB-TASK FORCE REPORT - SUMMARY OF DATA.
1975. 3 LF.

Correspondence, transcripts of interviews, statistical reports, and narrative reports created as a result of investigations made by the Administrative Sub-Task Force to evaluate management and organizational effectiveness of the various regional offices of the National Park Service.

The records in this series are arranged in the following order: Summary of Data; Report for the Washington Area Office; Report for the Western Region Office; Report for the Midwest Region Office; Report for the North Atlantic Region Office; Report for the National Capital Parks; Report for the Southeast Regional Office; Report for the Mid-Atlantic Region Office; Report for the Pacific Northwest Regional Office; Report for the Rocky Mountain Regional Office.

Box 1-6.

SERIES 2 YOUTH CONSERVATION CORPS - PROGRAM MATERIAL.
1976-1779. 6 IN.

The YCC was established within the Departments of the Interior and Agriculture to offer gainful summer employment in public land areas for youth ages 15-18 so that they might develop an understanding and appreciation of the Nation's natural environment and heritage. This series contains correspondence, contracts, and budget material. Correspondence concern contracting with local colleges and universities for YCC camps, program organization, administration and supervision of the camps, financial matters, training and personnel matters, and supply and equipment procurement. Also included are copies of cooperative agreements with Appalachian State University and Western Carolina University. Assistant Superintendent Ray Brotherton served as administrative officer and contracting officer for the YCC program on the Blue Ridge Parkway.

Arranged chronologically.

Box 7.

RG 4: ASSISTANT SUPERINTENDENT'S OFFICE

SERIES 3 YOUTH CONSERVATION CORPS - CONTRACTS. 1977-1984.
2.5 LF.

Contracts with Ferrum College, Appalachian State University, and Southern Seminary Junior College for YCC camp operations. Correspondence concerning contracts, contract modifications, equipment used in YCC operations, budget allotments and expenditures, insurance, and camp schedules are also included.

Arranged by YCC fiscal year.
Box 8-12.

SERIES 4 YOUNG ADULT CONSERVATION CORPS. 1977-1982. 2 LF.

Correspondence, memos, reports, and newsletters documenting YACC activities along the Blue Ridge Parkway. The YACC was established in 1977 to provide employment to youths (ages 19-24) who would not otherwise be productively employed, focusing on a segment of the American population which experienced excessive unemployment. Youths were employed to perform conservation work on public lands. Documents were originally maintained in loose leaf binders.

Documents are arranged in two "books." Book 1 contains the following: Copies of Public Law 95-93 establishing the YACC; Policy Manual; Administration and Operations; Procurement; Equipment.

Book 2 contains the following: Personnel; Training; Budget; Fiscal (Payroll & Accounting); Resident Camp; TAP Sheets; Miscellaneous.

Box 13-16.

SERIES 5 NATIONAL ASSOCIATION OF GOVERNMENT EMPLOYEES
(LOCAL R4-75). 1971-1988. 2 LF.

Primarily correspondence relating to contract negotiations between the Blue Ridge Parkway and Union Local R4-75 of the National Association of Government Employees. Documents were originally arranged in loose leaf binders.

Documents are arranged in three "books." Book 1 (1971-1978) contains the following: Basic Agreement; Supplementary Agreement No. 1; Joint Labor/Management Cooperative Committee; Negotiating Correspondence; Designation of Stewards; General Correspondence; Department of Labor Instructions; Department of the Interior Instructions; Civil Service Commission Instructions; National Park Service Instructions; Executive Orders; Miscellaneous.

Book 2 (1979-1980) contains the following: Contract; Amendment No. 1; Minutes; Correspondence.

Book 3 (1981-1988) contains the following: Correspondence.
Box 17-20.

RG 4: ASSISTANT SUPERINTENDENT'S OFFICE

SERIES 6 AMERICAN FEDERATION OF GOVERNMENT EMPLOYEES
(LOCAL 3758). 1978-1988. 2.5 LF.

Correspondence, contracts, and minutes of contract negotiations between the Blue Ridge Parkway and Local 3758 of the American Federation of Government Employees (AFGE). Also includes correspondence and a petition to merge AFGE Local 3758 with AFGE Local 446.

Arranged in the following order: Contracts (1978-1980); Minutes (1979); Correspondence (1978-1988); Merger Petition (1983).

Box 21-25.

RECORD GROUP 5

RECORDS OF THE DIVISION OF RESOURCE PLANNING AND PROFESSIONAL SERVICES (CAT. NO. BLRI-8228)

The Division of Resource Planning and Professional Services is one of four major administrative divisions within the Blue Ridge Parkway. The division was created in 1987 with Art Allen serving as the first Division Chief. The division has three major responsibilities: Planning and Development, History and Archeology, and Natural and Social Sciences. Planning and development activities include the following: Coordinating special projects of the Blue Ridge Parkway; Coordinating activities in compliance with the Master Plan, Resource Management Plan, and the General Management Plan; Coordinating Parkway activities with various federal, state, and local government agencies as well as private organizations; Establishment of policies concerning special user permits, scenic easements, right-of-way grants, and other various forms of land use; Preparation and updating of the Land Protection Plan.

History and Archeology activities are supervised by the Cultural Resource Management Specialist. Responsibilities of this office include the following: Ensuring that the Parkway is in compliance with all laws, regulations, and policies concerning historic preservation and cultural resource management; Ensuring that proper Section 106 compliance procedures are initiated for development projects; Providing oversight in matters relating to the List of Classified Structures, nominations for the National Register of Historic Places, historic resource studies, historic preservation structure reports, historic furnishing studies, historic structure guides, and other cultural resource management documents; Oversight of the Blue Ridge Parkway Archives; Coordination of data gathering, planning, and legal compliance for archeological projects and coordination of archeological activities with the Southeast Regional Office and the Southeast Archeological Center; Coordination of interpretative activities with the Interpretive Specialist and the Division of Resource Management and Visitor Services.

Natural and Social Science activities are supervised by the Natural Resource Management Specialist. Responsibilities of this office include the following: Planning research activities for a variety of natural resource management programs, including vegetation, wildlife, fisheries, water quality, and trails; Planning research activities for social science activities, primarily concerning visitor use of Parkway facilities; Preparing and reviewing environmental impact statements and environmental assessments; Developing the Parkway's Natural Resource Management Plan.

RG 5: RESOURCE PLANNING AND PROFESSIONAL SERVICES

The office of the Resident Landscape Architect was placed within the Division of Resource Planning and Professional Services in 1987. For a full description of these records see Record Group 7.

The records in this group are divided into three major divisions: Planning and Development, History and Archeology, and Natural and Social Sciences. The record group consists of a variety of material which document the activities of the division in these three major areas. The records in this group comprise 54.5 linear feet and date 1931-1988.

RECORD SERIES

PLANNING AND DEVELOPMENT

SERIES 1 PLAN OF ACCESS. 1937, 1976-1981, 1986. 4 IN.

Correspondence, reports, problem statements, statistical abstracts, and newspaper clippings regarding access roads to the Parkway. A position paper for the plan of access gives a legislative and planning history of the Parkway and includes a problem statement regarding too many private and public access roads. A task directive from a Denver Service Center study team and a draft land acquisition plan are also included.

Arranged chronologically.

Box 1.

SERIES 2 STATEMENT FOR MANAGEMENT. 1978-1979, 1988. 2 IN.

Booklets containing Statements for Management for the Blue Ridge Parkway. Statements for Management are a general planning document used for short and long term management planning. Statements contain information on legislative and administrative requirements, inventory of resources, land use trends analysis, visitor use analysis, and maps of the Parkway. A list of management objectives is also given. A spiral bound copy of the 1988 Statement for Management (Cat. No. BLRI-8346) is included.

Arranged chronologically.

Box 1.

RG 5: RESOURCE PLANNING AND PROFESSIONAL SERVICES

SERIES 3 STATEMENT FOR MANAGEMENT - RESPONSES AND COMMENTS.
1978-1979. 2 IN.

Letters from government officials, congressional representatives, chamber of commerce officials, university officials, and private individuals and organizations regarding the Blue Ridge Parkway Statement for Management. Most letters acknowledge receipt of the statements. Some letters contain comments on the Statement for Management.

Arranged chronologically.
Box 2.

SERIES 4 STATEMENT FOR MANAGEMENT - NEWS ARTICLES AND PRESS
RELEASES. 1978-1979. 0.5 IN.

Newspaper clippings and official Parkway press releases regarding the Statement for Management plan and its availability for public review.

Arranged chronologically.
Box 2.

SERIES 5 STATEMENT FOR MANAGEMENT - LAND CLASSIFICATION MAPS.
1979. 3 IN. (CAT. NO. BLRI-8347).

Original and mylar copies of maps representing specific areas along the Parkway. Mylar copies are accompanied by a land classification map key indicating special use zones, natural zones, historic zones, and development zones. These maps were presumably for use in the Statement for Management but no reproductions are included in any available statements.

Not arranged.
Box 2.

SERIES 6 DECLARATION FOR BASIC OPERATIONS. DECEMBER 1981.
0.5 IN.

Statement outlining the legislative authorization of the Parkway, classification of land resources, visitor services descriptions, priorities of management, and Blue Ridge Parkway Extension authorization.

Box 2.

SERIES 7 PLANNING PROGRAM AND MASTER PLAN. 1940-1979. 3 LF.

Correspondence and memorandums from the Southeast Regional Office and the Washington Office of the National Park Service regarding development and implementation of planning programs and the Master Plan of the Blue Ridge Parkway. Many of the correspondence concern the Guilford Courthouse Master Plan. Correspondence regarding planning funds and expenditures are included as well. A

RG 5: RESOURCE PLANNING AND PROFESSIONAL SERVICES

report with photographs from the Chief Ranger to the Superintendent regarding campground design and management criteria (1966) is included. Also included are copies of the "Master Plan of the Blue Ridge Parkway," (Cat. No. BLRI-8348) prepared by Robert A. Hope, et. al. (1964) and "Master Plan, Blue Ridge Parkway," prepared by the National Park Service in 1971 (Cat. No. BLRI-8349). See also RG 7 Series 57 - Series 58.

Arranged chronologically.
Box 3-8.

SERIES 8 MASTER PLAN - RECREATION AREAS. 1936, 1940-1977.
1.5 LF.

Correspondence and memorandums, primarily among National Park Service officials, regarding plans for the development of recreation areas along the Parkway. Major subjects include development of concessions and visitor centers, specifications for developed areas including buildings and utilities, design analysis, and revisions to master plan drawings. Some correspondence with private individuals regarding Parkway plans in recreation areas. Also includes a petition advocating against a nature trail in Cone Park and a "Special Report on Dam Sites at Rocky Knob," prepared by Geoffrey W. Crickmay. Recreation areas covered included Julian Price and Cone Memorial Park, Peaks of Otter, Craggy Gardens, E.B. Jeffress Park, Doughton Park, Cumberland Knob, Humpback Rocks, Rocky Knob, and Mabry Mill. See also RG 7 Series 57 - Series 58.

Arranged chronologically.
Box 9-11.

SERIES 9 MASTER PLAN - ROAD SYSTEM PLAN. 1948-1954, 1958, 1969.
6 IN.

Correspondence and memorandums, primarily among National Park Service officials, regarding plans for the development of roads and trails along the Parkway. See also Series 18 and RG 7 Series 57 - Series 58.

Arranged chronologically.
Box 12.

RG 5: RESOURCE PLANNING AND PROFESSIONAL SERVICES

SERIES 10 DEVELOPMENT OUTLINE AND MASTER PLANS (EXCEPT RECREATIONAL AREAS AND ROAD SYSTEM PLANS). 1943, 1946, 1950-1957, 1959-1969. 6 IN.

Correspondence primarily concerning interpretive planning activities, design analysis, and the master plan for the Blue Ridge Parkway. Other subjects include the natural history base map, the headquarters visitor center, and the Yellow Mountain area. See also RG 7 Series 57 - Series 58.

Arranged chronologically.
Box 13.

SERIES 11 MASTER PLAN - PUBLIC MEETINGS. 1970-1971. 6 IN.

Summary report of statements presented at public meetings held in December 1970 to discuss the master plan of the Blue Ridge Parkway. Letters from private individuals and responses from the Superintendent are included. Newspaper clippings concerning the public meetings are also included. See also RG 7 Series 57 - Series 58.

Arranged chronologically.
Box 14.

SERIES 12 MASTER PLAN - BLUE RIDGE PARKWAY EXTENSION - PUBLIC MEETINGS. 1970-1971. 1 LF.

Letters from private individuals, mainly in protest of the extension of the Blue Ridge Parkway into Georgia. Also includes a petition protesting the extension of the Parkway into Rabun County, Georgia. Resolutions and statements from groups and organizations are included as well. Correspondence, petitions, and statements are in response to public meetings held in November and December 1970. Also included are newspaper clippings regarding the public meetings. See also RG 7 Series 25 - Series 32.

Arranged chronologically by year.
Box 15-16.

SERIES 13 PLANNING - SOCO BALD AREA. 1935, 1940, 1947-1948, 1956, 1959-1960, 1964-1965, 1968, 1983. 6 IN.

Correspondence regarding use of the Blue Ridge Parkway by the Cherokee Indians and regarding the development of Cherokee Tribal lands bordering the Parkway at Soco Bald, North Carolina. Some correspondence concern efforts to include the development of the Soco Bald area in the approved Blue Ridge Parkway master plan so as to allow for the development of a concession area. Additional correspondence concern negotiation of a long term lease of Cherokee tribal lands by the Blue Ridge Parkway whereby the National Park Service would lease tribal lands and enter into a concessions agreement with the tribe for the establishment of

RG 5: RESOURCE PLANNING AND PROFESSIONAL SERVICES

visitor facilities.

Arranged chronologically.

Box 17.

SERIES 14 PLANNING - HEMPHILL KNOB HEADQUARTERS. 1985-1988.
6 IN.

Correspondence, letters of support, resolutions, and copies of newspaper articles regarding the development of the Blue Ridge Parkway Headquarters at Hemphill Knob, North Carolina. Also includes draft development concept plans, a draft environmental assessment, cost estimates, cultural resource documentation, and task directives. See also Series 15.

Arranged chronologically.

Box 18.

SERIES 15 PLANNING - NORTH CAROLINA MOUNTAIN EXPERIENCE CENTER.
1978-1981, 1986-1987. 1 LF.

Correspondence, site evaluations, committee reports, program concepts, briefing statements, agreements with various government agencies, and newspaper clippings regarding the development of the North Carolina Mountain Experience Center near Asheville, North Carolina. Includes a copy of "Site Evaluation for the North Carolina Mountain Experience Center: Final Report to the Coordinating Council," by Six Associates, Inc. for the Land-of-Sky Regional Council. Also includes a copy of "A Study for the Blue Ridge Parkway Headquarters." See also Series 14.

Arranged chronologically.

Box 19-20.

SERIES 16 PLANNING - CONE-PRICE MEMORIAL PARK. 1966-1973, 1979,
1981. 6 IN.

Correspondence and newspaper clippings regarding development plans for the Moses H. Cone-Julian Price Memorial Park. Some correspondence concern the Julian Price Memorial Park Americana Project designed to preserve the art, literature, music, and folklore of the Appalachian Mountains Region and the Southern Highlands. Plans called for a living pioneer village and farm with authentic craft demonstrations. Also included in this series are a development area plan for Price Park, a master plan for the Americana Project, a resource management plan for Moses H. Cone Memorial Park (1969) which includes photos, a task directive for Cone-Price Park, and a copy of the master plan and development analysis for Julian Price Memorial Park (1967).

Arranged chronologically.

Box 21.

RG 5: RESOURCE PLANNING AND PROFESSIONAL SERVICES

SERIES 17 MANAGEMENT OBJECTIVES. 1969-1971, 1974-1975. 6 IN.

Correspondence concerning development and revision of management objectives for the Blue Ridge Parkway and for the Blue Ridge Parkway Extension. Also includes copies of management objectives which outline goals for Parkway management and which provide information on the history, development, and basic descriptive data on the Parkway.

Arranged chronologically.
Box 22.

SERIES 18 ROADS AND TRAILS. 1932-1951, 1963-1977. 2 LF.

Correspondence concerning various aspects of roads and trails along the Parkway. Major subjects include the opening of Parkway sections, improvements to the roadway, construction, openings and closings of the Parkway, and policies concerning use and maintenance of roads and trails along the Parkway. Also included are correspondence and newspaper clippings concerning the Appalachian Trail, horse trails, and bicycle trails. See also Series 9.

Arranged chronologically.
Box 23-26.

SERIES 19 APPALACHIAN TRAIL. 1970-1971, 1974-1981. 6 IN.

Correspondence, newspaper clippings, and memorandums regarding Appalachian Trail acquisition along the Blue Ridge Parkway and trail relocation procedures.

Arranged chronologically.
Box 27.

SERIES 20 ART LOEB TRAIL. 1979. 3 IN.

Correspondence, proposals, and memorandums of agreement concerning the Art Loeb Trail, a scenic foot trail to the Shining Rock Wild Area.

Arranged chronologically.
Box 28.

SERIES 21 MT. MITCHELL TRAIL. 1977-1979. 3 IN.

Interim reports and agreements on the proposed Mt. Mitchell to Mt. Pisgah Foot Trail System, also called the "Shut-In Trail" system. The trail was to be designed in cooperation with the U.S. Forest Service.

Arranged chronologically.
Box 28.

RG 5: RESOURCE PLANNING AND PROFESSIONAL SERVICES

SERIES 22 TRAILS CONSTRUCTION. 1959, 1961-1962, 1964-1971.
1 LF.

Correspondence, primarily with the U.S. Forest Service and private individuals, concerning the establishment of trails along the Blue Ridge Parkway. Many of the correspondence relate to the Rocky Knob Trail and the trail system in the James River District. Also includes memorandums of understanding between the U.S. Forest Service and the Blue Ridge Parkway. Newspaper clippings and evaluations of the trail system are included as well.

Arranged chronologically.
Box 29-30.

SERIES 23 FOLK ART CENTER 1976-1980, 1982. 6 IN.

Correspondence and newspaper clippings concerning bids, contracts, agreements, and planning of the Folk Art Center. Many of the correspondence are with architects concerning the design of the facility.

Arranged chronologically.
Box 31.

SERIES 24 DAMS. 1950-1956, 1962-1964, 1972, 1984. 6 IN.

Correspondence primarily concerning construction of the Peaks of Otter Lake. Other subjects include repairs to the Price, Bass, and Trout Lake dams, core borings, Fisher's Peak dam, and the dam at Mabry Mill.

Arranged chronologically.
Box 32.

SERIES 25 SOIL AND MOISTURE CONTROL. 1939, 1941-1958, 1962-1972, 1975-1976. 6 IN.

Correspondence primarily concerning watershed areas and agreements with government agencies concerning soil conservation districts. A report on soil and moisture conservation practices on the Blue Ridge Parkway is included. The report includes photographs. Newspaper clippings regarding soil and moisture control issues are also included. See also Series 81.

Arranged chronologically.
Box 33.

RG 5: RESOURCE PLANNING AND PROFESSIONAL SERVICES

SERIES 26 HISTORIC AMERICAN BUILDINGS SURVEY. 1939-1942, 1959.
1 IN.

Correspondence concerning Brinegar Cabin and Mabry Mill as part of the Historic American Buildings Survey. Also includes historical and physical data on these sites. See also Series 48 - Series 50.

Arranged chronologically.
Box 34.

SERIES 27 MEMORIALS. 1953-1958, 1961, 1963, 1965-1971,
1982-1983. 5 IN.

Correspondence, primarily with congressmen and private individuals, requesting plaques and memorials to commemorate a person or event. Newspaper clippings concerning memorials are also included. Some correspondence and newspaper clippings contain historical information about the person being honored. Major subjects include the Roy A. Taylor Forest and Overlook and the Confederate Veterans Memorial Marker.

Arranged chronologically.
Box 34.

SERIES 28 GUARDRAIL DESIGN. 1938, 1946-1982. 2 IN.

Correspondence regarding design and use of metal, timber, and concrete guardrails along the Parkway. Some correspondence concern the use of guardrails to meet federal safety standards. See also RG 9 Series 18.

Arranged chronologically.
Box 35.

SERIES 29 ENTRANCE AND INFORMATION STATIONS. 1942, 1947-1954,
1956-1958, 1961-1968, 1970-1977. 4 IN.

Correspondence regarding construction and maintenance of entrance and information stations along the Parkway. Plans for proposed stations and plans for existing stations in other national parks are included.

Arranged chronologically.
Box 35.

SERIES 30 FENCES. 1942-1943, 1947-1951. 3 IN.

Correspondence regarding the design and construction of fences for use along the Parkway.

Arranged chronologically.
Box 36.

SEE ALSO CATALOG # 11455 - FENCE STUDY, 1995

RG 5: RESOURCE PLANNING AND PROFESSIONAL SERVICES

SERIES 31 PLANNING, PREPARATION, MAINTENANCE, AND PRESERVATION OF MUSEUM EXHIBITS. 1971-1973, 1980, 1985. 3 IN.

Correspondence, primarily with the Regional Curator, regarding policies over Park collections and the Americana Project.
Arranged chronologically.
Box 36.

SERIES 32 MUSEUM AND EXHIBIT ACTIVITIES. 1953-1982. 3.5 LF.

Correspondence concerning the layout and design of exhibits, buildings, and exhibit cases at visitor centers along Parkway. Also includes land ownership information for the Humpback Rocks Visitor Center area and a copy of the memorandum of agreement with the North Carolina Department of Conservation and Development for the establishment of the Museum of North Carolina Minerals on the Blue Ridge Parkway at Gillespie Gap (1956).

Records are arranged in the following order: Craggy Gardens (1953-1969); Doughton Park (1958, 1965, 1969); Humpback Rocks (1955-1967, 1976, 1980, 1982); James River Canal (1956-1967, 1971); Museum of North Carolina Minerals (1955-1960, 1962, 1965-1966, 1968, 1970-1971); Peaks of Otter (1956-1963, 1967-1969, 1971); Waterrock Knob Shelter (1966-1968).

Box 37-43.

SERIES 33 MUSEUM ACQUISITIONS AND LOANS. 1953-1959, 1961-1976.
6 IN.

Correspondence with other museums regarding loan of artifacts for exhibit in Parkway museums and visitor centers. Some correspondence concern donations of artifacts from individuals.
Arranged chronologically.
Box 44.

SERIES 34 MUSEUM REPORTS. 1956, 1966-1974, 1976. 6 IN.

Annual inventory of museum specimens and artifacts. Also includes quarterly reports of museum property which records the value of each museum item.
Arranged chronologically.
Box 45.

SERIES 35 SIGNS. 1945-1946, 1948-1950, 1953-1973. 6 IN.

Correspondence concerning the establishment of standards and procedures for Parkway signs. Other subjects include specifications for sign placement and design, cost of signs, and construction. See also Series 36.
Arranged chronologically.
Box 46.

RG 5: RESOURCE PLANNING AND PROFESSIONAL SERVICES

SERIES 36 SIGN MANUALS. 1943, 1948-1949, 1960-1961, 1963-1968, 1971, 1977. 3 IN.

Correspondence regarding sign design, placement, and maintenance. Includes a copy of the "Traffic Sign Manual," (Cat. No. BLRI-8350) prepared in 1960 and a copy of the "Sign Manual Supplement for Installation of Metal Road Signs on Blue Ridge Parkway," (Cat. No. BLRI-8351) prepared in 1943. See also Series 35.

Arranged chronologically.
Box 47.

SERIES 37 BOUNDARY SIGNS. 1960-1967, 1971. 3 IN.

Correspondence regarding the cost, procurement, and placement of vertical aluminum boundary signs for the Blue Ridge Parkway.

Arranged chronologically.
Box 47.

RG 5: RESOURCE PLANNING AND PROFESSIONAL SERVICES

HISTORY AND ARCHEOLOGY

SERIES 38 ADMINISTRATIVE HISTORY. 1941-1980. 1 LF.

A variety of documentation, assumed to have been compiled by Dr. Harley E. Jolley, which provides information on the history of the Blue Ridge Parkway and its personnel. This series includes note cards regarding Parkway personnel, a chronology of Parkway construction, copies of journal and magazine articles about the Parkway, copies of articles by Parkway personnel including Stanley Abbott and Edward Abbuehl, correspondence between Edward Abbuehl and Harley Jolley concerning the history of the Parkway, and a manuscript book draft by Granville Liles (no title). Also included are copies of brief Parkway histories, including "The Blue Ridge Parkway: Blowing Rock to Linville Falls," by Edward H. Abbuehl (April 1966) and a manuscript copy of "The Blue Ridge Parkway - The First Fifty Years," by Harley E. Jolley. For additional biographical information on Parkway employees see also RG 2 Series 4.

Not arranged.
Box 48-49.

Box 48 7-28-99

Box 49 7-29-99

SERIES 39 CLASSIFIED STRUCTURE FIELD INVENTORY REPORTS.
1975-1979, 1982-1983. 3 IN.

Completed classified structure field inventory report forms which list names of historic structures, recommended preservation treatment and cost of treatment, and a physical description of the structure. Forms were completed by F.A. Ketterson, Jr., Historian, primarily in 1976. Some correspondence concerning historic structures are also included.

Arranged chronologically.
Box 50.

SERIES 40 MOSES H. CONE FACT BOOK. 1939-1977. 3 IN.

Informational resource binders for interpreters compiled by Harley E. Jolley, Seasonal Research Historian. The documentation is varied but primarily concerns Moses H. Cone, Bertha Cone, and the Cone Estate in Blowing Rock, North Carolina. Includes copies of newspaper and magazine articles, a copy of Bertha L. Cone's will, and correspondence regarding National Park Service acquisition of the estate. Includes transcripts of oral history interviews with Carl Hollers, Charlie Isenhour, and Ted Pease. Also includes a copy of a research paper titled "Moses H. Cone: His Family, His Fortune and His Life," by Maribeth Crandell. See also Moses H. Cone Papers.

Not arranged.
Box 50.

RG 5: RESOURCE PLANNING AND PROFESSIONAL SERVICES

SERIES 41 AREA AND SERVICE HISTORY. 1936-1986. 1 LF.

A variety of documentation concerning the history of the Blue Ridge Parkway, the Appalachian Mountains, and the Southern Highlands. This series includes: Essays on the history of the landscape and architectural program of the Parkway by Edward H. Abbuehl; Copies of magazine and newspaper articles on historically significant people, places, and events along the Parkway; Requests from Parkway visitors on the history of structures; Reports and notes on historically significant structures; Photographs and sketches of Charlie Bowman's Cabin and the Harry Lineberry Cabin; Historical information of Negro Mountain; Biographical information and obituaries on Parkway personnel; Historical information on Parkway areas; "History of the Blue Ridge Parkway" typescript by Edward H. Abbuehl (Feb. 1948); Biographical material on Robert L. Doughton and information on the dedication of Doughton Park; A brochure on the "Hotel Mons and Peaks of Otter," (Cat. No. BLRI-8129) published ca. 1948.

Records are arranged in the following order: General (1936-1986); Doughton Park (1941-1962); Mountain Industry (1949-1963); Peaks of Otter (1948-1980).

Box 51-52.

SERIES 42 BIOGRAPHICAL DATA AND SPECIAL COLLECTIONS. 1986-1987.
3 IN.

Biographical information on Nathaniel Lindau Lewis whose family was associated with the Moses H. Cone Estate. Letters concerning housing of Blue Ridge Parkway archival records at Virginia Polytechnic Institute are included. A skills development plan for historical architects in the National Park Service is also included. For biographical information on Parkway employees see RG 2 Series 4.

Arranged chronologically.
Box 53.

SERIES 43 COLLECTIONS MANAGEMENT AND PRESERVATION. 1976-1977,
1980, 1984-1987. 3 IN.

Correspondence, primarily with the Regional Curator and the Southeast Archeological Center, regarding care, handling, and registration of historical materials in the Park. Also included are copies of catalogue records for archeological artifacts collected at Peaks of Otter and Mabry Mill.

Arranged chronologically.
Box 53.

RG 5: RESOURCE PLANNING AND PROFESSIONAL SERVICES

SERIES 44 CULTURAL RESOURCES STUDIES AND RESEARCH. 1931-1988.
3 LF.

Correspondence concerning the development of historic resource studies, archeological reports, and historic structure reports. Includes correspondence and reports on the archeological survey of Hemphill Knob, North Carolina. Some correspondence concern the location of archeological sites, the compilation of a history of the Blue Ridge Parkway, and living history demonstrations. Also includes newspaper clippings concerning the archeology and history of Peaks of Otter, Virginia and other areas along the Parkway. Transcripts of oral history interviews and a copy of Waterway to the West, by James J. Kirkwood (Cat. No. BLRI-8130) are also included.

Records are arranged in the following order: General (1935-1987); National Park Service Areas (1954-1988); Basin Cove Oral History (1975); Brown Mountain Lights (1960-1976); Cool Springs Baptist Church (1976); Cradle of Forestry (1948-1974); Humpback Rocks (1981); James River Canal (1947-1978); Lancaster Farm (1978, 1982); Oral History (Non-NPS) (1974); Pisgah Inn (1934, 1962); Place Names (1939-1966); Polly Woods Ordinary (1976); Shaver House Oral History (1972); Urban Initiative Project (1979); Miscellaneous (1931-1962) *Box 59 7-29-99*

Box 54-59.

SERIES 45 HISTORY AND ARCHEOLOGY - REPORTS. 1972-1973,
1975-1987. 6 IN.

Primarily Superintendent's annual history reports to the Director, Southeast Regional Office. These reports contain information on personnel, budget and finance, interpretation and resource management, maintenance, and special events. Also included are reports to the Superintendent from departments and divisions within the Parkway. These reports contain information on organization and staffing, labor-management relations, training, special programs, concessions, law enforcement, fish and wildlife, campgrounds, historic preservation, and roads and trails.

Arranged chronologically.

Box 60.

SERIES 46 HISTORIC SITES AND STRUCTURES. 1936-1988. 2.5 LF.

Correspondence and reports concerning the preservation, management, and maintenance of historic sites and structures along the Parkway. Includes an inspection report on "old log cabins and other old structures along the Parkway" (1941), photographs of "old buildings" along the Parkway in the James River District, and classified structure field inventory reports for cemeteries.

RG 5: RESOURCE PLANNING AND PROFESSIONAL SERVICES

Records are arranged in the following order: General (1936-1988); Cemeteries (1976-1982); Peaks of Otter (1977); Puckett Cabin (1975); Rattlesnake Lodge (1976).

Box 61-65.

SERIES 47 NATIONAL REGISTER OF HISTORIC PLACES. 1973, 1978, 1981. 2 IN.

Letters from the Southeast Regional Office, the Southeast Archeological Center, and the North Carolina Department of Cultural Resources regarding National Register of Historic Places rosters and nominations. Includes a list of Blue Ridge Parkway properties on the National Register (1973). Some letters concern the Landmark Boundary Review Project. Also included is a historical research report on the Elbert Crouse Farmstead.

Arranged chronologically.

Box 66.

SERIES 48 NATIONAL SURVEY OF HISTORIC SITES AND BUILDINGS (NATIONAL HISTORIC LANDMARKS). 1951, 1961, 1964-1966, 1968-1969, 1971-1978. 10 IN.

Correspondence with National Park Service and state government officials regarding the National Survey of Historic Sites and Buildings program and the National Register of Historic Places. Major subjects include the Virginia Military Institute Barracks and Salem Tavern. Also included are National Landmark Review Visit Reports. See also Series 26.

Arranged chronologically.

Box 66-67.

SERIES 49 NATIONAL SURVEY OF HISTORIC SITES AND BUILDINGS - PROPOSED. 1962-1987. 1 LF.

Completed National Register of Historic Places inventory nomination forms which describe the location and physical characteristics of each nominated site and its historical significance. Research reports and appraisal reports on sites are included. Also included are correspondence regarding the relocation of the Kelly Spring House. See also Series 26.

Records are arranged in the following order: Bell Spring House (1973); Jesse Brown Cabin (1973, 1987); Buck Spring Springhouse (1973); Martin Caudill Cabin (1973); Civil War Earthworks (1962, 1973); Elbert Crouse Farmstead (1979-1981); Humpback Rocks Pioneer Farm (1967, 1973, 1976); Irish Creek Railroad (1965-1979); Johnson Farm (1975); Kelly Spring House (1967-1973); Polly Wood's Ordinary (1967, 1973); Puckett Cabin (1968-1977); Saunders Farm (1977); Shaver House (1972, 1974); Sheets Cabin (1973); Nathaniel Sledd Cabin (1973-1974, 1987); Trail Cabin (1967).

Box 68-69.

RG 5: RESOURCE PLANNING AND PROFESSIONAL SERVICES

SERIES 50 NATIONAL SURVEY OF HISTORIC SITES AND BUILDINGS -
ELIGIBLE OR ESTABLISHED. 1942-1975. 6 IN.

Completed National Register of Historic Places inventory forms which describe the location and physical characteristics of each registered or eligible site and its historical significance. Research reports and appraisal reports on sites are also included. See also Series 26.

Records are arranged in the following order: Biennial Visits to Registered National Historic Landmarks (1974-1975); Biltmore Estate (1963-1975); Mabry Mill (1942-1975); Matthews Cabin (1968, 1973); Reed Gold Mine (1971-1973); Thomas Wolfe Memorial (1972-1975).

Box 70.

SERIES 51 HISTORIC PRESERVATION PROGRAM OVERVIEW. 1980-1983,
1985-1987. 6 IN.

Correspondence with the Southeast Regional Office and state cultural resource agencies regarding repairs and alterations to historic structures along the Parkway.

Arranged chronologically.

Box 71.

SERIES 52 HISTORIC PRESERVATION PROGRAM - COMPLIANCE
DOCUMENTATION. 1976-1978, 1980-1983. 6 IN.

Correspondence and compliance statements to document Parkway compliance with Section 106 of the Historic Preservation Act. Some correspondence concern the administrative history of the Parkway. Compliance documentation was compiled for the following sites: Bell Spring House; Brinegar Cabin; Browning Cabin; Buck Springhouse; Caudill Cabin; Cool Spring Baptist Church; Dellinger Farm; Humpback Rocks Farm; Irish Creek Railroad; James River and Kanawha Canal; Jesse Brown Springhouse and Cabin; Johnson Farm; Kelly Springhouse; Mabry Mill; Moses Cone Estate; Peaks Shelter; Polly Wood's Ordinary; Puckett Cabin; Rake's Millpond and Dam; Shaver House; Shuford Couble Pen Barn and Springhouse; Trail Cabin; Whorley House.

Arranged chronologically.

Box 72.

RG 5: RESOURCE PLANNING AND PROFESSIONAL SERVICES

NATURAL AND SOCIAL SCIENCES

SERIES 53 ANIMAL AND PLANT LIFE - OBSERVATIONS AND STUDIES.
1968, 1971, 1974-1982, 1985, 1986. 6 IN.

Correspondence and newspaper clippings primarily regarding endangered species in Virginia and North Carolina. Many correspondence relate to a project to study the Eastern Cougar population. Copies of the Eastern Cougar Newsletter and case incident reports on cougar sightings are included. Also included are reports on "A Taxonomic Survey of Phycophytes and Bryophytes in the Sims Pond Area of the Blue Ridge Parkway" (1971) and the "Ecology of the Blue Ridge Parkway Mile Post 305-355," by William L. Bancroft (1968).

Arranged chronologically.

Box 73.

SERIES 54 AMPHIBIANS AND REPTILES - OBSERVATIONS AND STUDIES.
1952-1954, 1955, 1957, 1962-1965, 1967-1969, 1972,
1977. 3 IN.

Correspondence, reports, notes, and case incident reports primarily dealing with bog turtle sightings, salamanders, and snakes along the Parkway. Copies of journal articles concerning salamanders are also included.

Arranged chronologically.

Box 74.

SERIES 55 BIRDS - OBSERVATIONS AND STUDIES. 1950-1986. 3 IN.

Correspondence, reports, notes, and case incident reports primarily dealing with turkeys, owls, and a bald eagle survey along the Parkway.

Arranged chronologically.

Box 74.

SERIES 56 FISH - OBSERVATIONS AND STUDIES. 1963-1964, 1968,
1971-1976, 1978-1986. 3 IN.

Correspondence, reports, notes, and case incident reports primarily dealing with fisheries management at Rock Castle Creek, Little Rock Castle Creek, Price Lake, and other water areas along the Parkway. Some correspondence concerning public fishing regulations are also included.

Arranged chronologically.

Box 75.

RG 5: RESOURCE PLANNING AND PROFESSIONAL SERVICES

SERIES 57 MAMMALS - OBSERVATIONS AND STUDIES. 1950-1981, 1986.
3 IN.

Correspondence, reports, notes, and case incident reports primarily dealing with mountain lions, bear management, flying squirrels, and elk along the Parkway. Many of the correspondence are with university officials. Also included is a copy of a draft memorandum of understanding with North Carolina State University regarding black bear research along the Parkway. Reports on wildlife problems along the Parkway and reports on black bears are included as well.

Arranged chronologically.

Box 75.

SERIES 58 INSECTS AND INVERTEBRATES - OBSERVATIONS AND STUDIES.
1954-1986. 2 IN.

Correspondence, reports, notes, and case incident reports primarily dealing with insects along the Parkway, including gypsy moths, cicada, and kanker worms.

Arranged chronologically.

Box 76.

SERIES 59 PLANTS - OBSERVATIONS AND STUDIES. 1945-1986. 10 IN.

Correspondence, reports, notes, and case incident reports primarily dealing with the sighting and identification of rare or endangered plants along the Parkway. Many of the correspondence are with college and university officials. Some of the correspondence deal with monitoring and inventorying endangered plants along the Parkway and the Parkway bloom calendar. Copies of journal articles concerning plants and trees, bloom calendar data (1948-1974), and a typescript of "Vegetation of the Black Mountains of North Carolina: An Ecological Study," by John H. Davis (1954) are also included.

Arranged chronologically.

Box 76-77.

SERIES 60 MANAGEMENT OF NATURAL RESOURCES AND AREAS. 1969,
1971-1986. 1 LF.

Correspondence with federal and state natural resource officials concerning policy and practice regarding the management of natural resources.

Arranged chronologically.

Box 78-79.

RG 5: RESOURCE PLANNING AND PROFESSIONAL SERVICES

SERIES 61 WILDLIFE MANAGEMENT. 1965-1969, 1971-1986. 1 LF.

1939 also
Correspondence dealing primarily with the Blue Ridge Parkway Wildlife Management Review Committee and with bear management along the Parkway. Occasional newspaper clippings are included. See also RG 9 Series 4.

Arranged chronologically.
Box 80-81.

SERIES 62 PLANT LIFE MANAGEMENT. 1977-1986. 6 IN.

Correspondence and case incident reports regarding the management of plants and trees along the Parkway. Some letters from private individuals regarding plants along the Parkway are included. Copies of the Forest Resources Newsletter are also included.

Arranged chronologically.
Box 82.

SERIES 63 WATER LIFE MANAGEMENT. 1978-1986. 3 IN.

Correspondence and case incident reports regarding fish, stocking lakes, and public fishing regulations along the Parkway. Arranged chronologically.

Box 83.

SERIES 64 THREATENED AND ENDANGERED SPECIES. 1978-1985. 3 IN.

Correspondence concerning the location, identification, and listing of endangered species of plants and animals. Some correspondence regarding protection of endangered species and Parkway policies for endangered species are also included.

Arranged chronologically.
Box 83.

SERIES 65 NATURAL SCIENCE. 1950-1977. 6 IN.

Correspondence dealing primarily with the location, identification, and description of plants along the Parkway, particularly poisonous plants.

Arranged chronologically.
Box 84.

SERIES 66 NATURAL AND SOCIAL SCIENCE RESEARCH PROGRAMS.
1962-1986. 4 LF.

Correspondence, many with university officials, and copies of journal articles regarding research projects along the Parkway. Some of the correspondence concern the issuance of collecting permits for research projects. Correspondence concerning

RG 5: RESOURCE PLANNING AND PROFESSIONAL SERVICES

the location of rare and endangered plant communities are included. Also included are copies of research reports including "Man and Nature in the Southern Appalachians," by Dr. Eugene Wilhelm, Jr., "The Complete Illustrated Book of Dyes from Natural Sources," by Dr. Arnold Krochmal, and "Mammals of the Blue Ridge Mountains," by Dr. James L. Chamberlain.

Records are arranged in the following order: General (1964-1970, 1972-1986); Dr. James L. Chamberlain (1964-1972); Dr. Arnold Krochmal (1974-1975); Dr. Frank Miller (1972-1974, 1976-1977); Rare and Endangered Species (1963, 1969, 1973-1978); Resource Management Plan (1975-1977); Survey of Important Plant Communities (1975-1977); Western North Carolina (1964-1977); Dr. Eugene Wilhelm, Jr. (1962-1971, 1973).

Box 85-92.

SERIES 67 AREA NATURAL SCIENCE RESEARCH PLANS. 1974-1980, 1982, 1984. 6 IN.

Correspondence concerning plans for bald maintenance, aquatic plant control, and timber management. A copy of a memorandum of understanding on the Southern Appalachian Resource Management Cooperative and a research prospectus on photographic evaluation of wildlife habitat are also included.

Arranged chronologically.

Box 93.

SERIES 68 NATURAL AND SOCIAL SCIENCES - RESEARCH PROPOSALS AND PROJECTS. 1978, 1980-1982, 1984-1986. 6 IN.

Correspondence primarily regarding the establishment of natural and social science resource management projects along the Parkway. Many of the correspondence concern a cooperative project with Western Carolina University for "Important Plant Habitats of the Blue Ridge Parkway, Mile Post 1-40," (1986). Some correspondence deal with the Craggy Gardens Resource Management Project.

Arranged chronologically.

Box 94.

SERIES 69 ANNUAL RESEARCH REPORTS - NATURAL SCIENCES. 1954, 1956-1968, 1972-1981. 1.5 LF.

Copies of reports which list research projects, names of investigators and affiliated institutions, and the expenditures on each project. Reports were sent to the Southeast Regional Office. Copies of investigator's annual report for each project are also included.

Arranged chronologically.

Box 95-97.

RG 5: RESOURCE PLANNING AND PROFESSIONAL SERVICES

SERIES 70 BEAR INCIDENT AND MANAGEMENT ACTION REPORTS.
1973-1980, 1983-1985. 3 IN.

Completed report forms which list number of bear incidents, number of incidents which caused injury to humans or property, and disposition taken with captured bears.

Arranged chronologically.
Box 98.

SERIES 71 ANNUAL WILDLIFE REPORTS. 1943, 1945, 1948-1958, 1960,
1962-1968. 3 IN.

Completed reports (Form 10-421) to the Director, Southeast Regional Office. The reports list name of wildlife species, estimated population, relative population, population trend, number moved out, number stocked by Park, and number killed. A narrative report of activities accompanies each report form. Also included are copies of the Biennial Animal Census Report.

Arranged chronologically.
Box 98.

SERIES 72 NATURAL AND SOCIAL SCIENCE - SITUATION REPORTS.
1958-1985. 6 IN.

Various reports concerning natural and social science research activities including the following: Annual Report of Supplemental Soil and Moisture Conservation Districts; Annual Aquatic Resources Report; Bald Eagle Mid-Winter Survey Report; Sport Fishing Report. Also included are reports on the fishery management program and the resource management study program.

Arranged chronologically.
Box 99.

SERIES 73 GEOLOGICAL FEATURES AND STUDIES. 1937-1985. 1 LF.

Correspondence and reports concerning glacier studies, geologic formations, and minerals along the Parkway. Some of the records concern a survey of the natural and historic features of Richland Balsam. Other records concern a study of geologic features of Wagon Road to Beech Gap. A special report on geologic signs and markers on the Blue Ridge Parkway (1939) is included.

Arranged chronologically.
Box 100-101.

RG 5: RESOURCE PLANNING AND PROFESSIONAL SERVICES

SERIES 74 GEOLOGICAL FEATURES AND STUDIES - BROWN MOUNTAIN LIGHTS. 1951-1955, 1959, 1962. 6 IN.

Correspondence and reports dealing with sightings, studies, and explanations of the mysterious wavering lights seen in the Brown Mountain area. Several correspondence with Dr. Donald H. Menzel, Professor of Astrophysics at Harvard University, are included.

Arranged chronologically.
Box 102.

SERIES 75 POLLUTION/ENVIRONMENTAL QUALITY. 1976-1986. 6 IN.

Primarily correspondence dealing with hazardous waste and waste sites which might impact the Parkway, emergency plans for dealing with hazardous substances, air and water pollution, and acid rain. Some records concern gravel removal at Boone Fork Creek. Records regarding a milkweed study (1984) are also included.

Records are arranged in the following order: General (1976-1986); Air (1977-1982, 1984-1986); Water (1979, 1983-1984); Land (1980, 1985).

Box 103.

SERIES 76 ENERGY RESEARCH. 1979-1981. 1 IN.

Primarily correspondence dealing with an experimental feasibility study on using small wind powered electrical generators in campgrounds. The study was made in cooperation with Appalachian State University at the Doughton Park Campground.

Arranged chronologically.
Box 104.

SERIES 77 NATURAL LANDMARKS. 1968-1986. 5 IN.

Correspondence regarding the flagging of the Mountains-To-The-Sea Trail, natural heritage areas such as the Julian Price Park Wetlands and Pearson's Fall Glen, and nominations for areas as Natural Landmarks. Some correspondence concerning efforts to register de la Howe Forest as a Natural Landmark are also included.

Arranged chronologically.
Box 104.

RG 5: RESOURCE PLANNING AND PROFESSIONAL SERVICES

SERIES 78 VISITOR USE SURVEYS AND STATISTICS. 1978-1986. 11 IN.

Monthly Parkway public use reports from district offices to the Superintendent. National Park Statistical Abstracts are also included.

Arranged chronologically.

Box 105-106.

SERIES 79 SOCIAL AND ECONOMIC SCIENCES - ASSESSMENTS. 1982.
1 IN.

Environmental assessment and vista management plan for the Blue Ridge Parkway (October 1982).

Arranged chronologically.

Box 106.

SERIES 80 PEST AND WEED CONTROL. 1978-1986. 1 LF.

Correspondence regarding the environmental impact of herbicides use on the Parkway. Some correspondence concern policies and guidelines for pesticides use on the Parkway.

Arranged chronologically.

Box 107-108.

SERIES 81 SOIL AND MOISTURE CONTROL. 1980, 1983, 1984, 1986.
2 IN.

Primarily correspondence regarding bank stabilization at Chestnut Creek and an evaluation of the soil survey program. See also Series 25.

Arranged chronologically.

Box 109.

SERIES 82 CHECK LIST OF PLANTS NATIVE TO THE EASTERN UNITED STATES. FEBRUARY 1963. 1 VOL. 2 IN.
(CAT. NO. BLRI-8132)

List compiled by Robert A. Hope. Spiral bound.

Box 109.

SERIES 83 BANCROFT SUGGESTION. 1969. 2 IN.
(CAT. NO. BLRI-8131)

A proposal submitted by William L. Bancroft, Park Ranger, on the National Park Service "Employee Suggestion Form." The suggestion proposed an informal research program among field employees of the National Park Service in order to "acquire a fund of knowledge about the natural resources."

Box 109.

RECORD GROUP 6

OLD LAND ACQUISITION FILES (CAT. NO. BLRI-7986)

The records in this group are primarily the files of Sam P. Weems, Project Manager for the Parkway's land acquisition and recreation development program from 1935 to 1938. Weems was stationed in Galax, Virginia to coordinate land surveying, appraisal, and acquisition efforts. In 1938, Weems became Assistant Superintendent. The records document land appraisal and purchases. Many of the correspondence reflect the difficulty of clearing title to much of the land needed for Parkway right-of-way. These records also document the surveying of the Parkway route and the construction of the Pinnacles of Dan (Danville) Hydro-Electric Power Plant.

The records are arranged by geographical area and date 1935-1938, although a small amount of records relating to lands owned by George Caudill and T.G. Moore are dated earlier. Surveyor's notes, correspondence, tract ownership data, appraisal reports, and offers to sell lands are included. The records total 9.5 linear feet. Additional records relating to land acquisitions can be found in RG 7 Series 1 - Series 24.

RECORD SERIES

SERIES 1 GENERAL CORRESPONDENCE. 1936-1937. 6 IN.

Correspondence files of Sam Weems, Project Manager. Letters, telegrams, and memorandums regarding progress and problems with land acquisition including personnel, project management, and "curative" matters for clearing title to land. Much of the correspondence concern the acquisition of land tracts owned by F.B. Caudill and W.F. Doughton. Occasional inquiries from land owners. Several letters from Conrad L. Wirth, Assistant Director of the National Park Service, and R. Baldwin Myers, Acting Chief, Land Acquisition, Recreational Demonstration Project. Some correspondence with area attorneys.

Arranged chronologically.
Box 1.

SERIES 2 ABSTRACTS AND SURVEYS, LP-NC 11. 1935-1936. 6 IN.

Sam Weems' file of legal correspondence, tract surveys (development surveys not included), option registers, and letters of land acceptance issued by the Land Utilization Division. Option Registers list project number, county, state, file number, grantor's name, tract number, option number, acreage, and date

RG 6: OLD LAND ACQUISITION FILES

issued. Most correspondence are with state and federal government officials and concern land acquisition in North Carolina. Occasional letters from surveyors. Some correspondence concern efforts to hire local persons on survey teams. Several letters to/from R.A. Doughton, attorney in Sparta, North Carolina. Occasional notes on survey efforts.

Originally compiled into two "books." Book 1 dated November 27, 1935 to March 10, 1936. Book 2 dated March 10, 1936 to August 1, 1936.

Arranged chronologically.
Box 2.

SERIES 3 LETTERS RECEIVED BY JOSEPH L. COCKERHAM. 1937. 3 IN.

Letters received by Joseph L. Cockerham, Area Attorney for the National Park Service. Most of the correspondence relate to clearing of titles to land acquired for the Blue Ridge Parkway. Includes several letters from Conrad L. Wirth, Assistant Director, National Park Service, and Tilford E. Dudley, Chief, Land Acquisition, Recreational Demonstration Project. Includes copies of letters between various state and federal officials.

Arranged chronologically.
Box 3.

SERIES 4 LAUREL SWAMP ACQUISITION FILES. 1935-1936. 3 IN.

Tract Ownership Data, Status of Tract Title, Appraisal Reports, Offers to Sell Lands to the United States, plat maps, and occasional handwritten deeds for land acquired in the Laurel Swamp area. Lands were appraised by Sam Weems. Some surveyor's and appraiser's notes also included. These records describe the land acquired for the Parkway and document the transfer of legal title, including the price paid for the land. Some of the lands appraised were not optioned for purchase. Lands were acquired from C.D. Belcher, Mary Boyd, S.H. Hubbard, John W. Whorley, and T.I. Whorley.

Arranged alphabetically by name of owner.
Box 3.

SERIES 5 FISHER'S PEAK ACQUISITION FILES. 1935-1936. 6 IN.

Tract Ownership Data, and Status of Tract Title for land acquired in the Fisher's Peak area. These records describe the land acquired for the Parkway and document the transfer of legal title. Some of the lands appraised were not optioned for purchase. Also included in this series is a list of property holders which describes the amount of land owned and contains remarks concerning ownership or location of the land.

Arranged alphabetically by name of owner.
Box 4.

RG 6: OLD LAND ACQUISITION FILES

SERIES 6 PINE SPUR CORRESPONDENCE FILES. 1935-1936. 2 IN.

Correspondence files of Sam Weems, project manager. Letters regarding progress and problems with land acquisition in the Pine Spur area including project management and "curative" matters. Several letters from W.S. Bahlam, Assistant Regional Projects Manager, Recreational Demonstration Project. Some correspondence with Stanley W. Abbott, resident landscape architect, and A.G. Dillon, option taker, also included.

Arranged chronologically.

Box 5.

SERIES 7 PINE SPUR ACQUISITION FILES. 1935-1936. 4 IN.

Tract Ownership Data, Status of Tract Title, Appraisal Reports, Offers to Sell Lands to the United States, plat maps, and occasional correspondence regarding land acquired in the Pine Spur area. Lands were appraised by Sam Weems. Some surveyor's and appraiser's notes also included. These records describe the land acquired for the Parkway and document the transfer of legal title, including the price paid for the land. Some of the lands appraised were not optioned for purchase.

Arranged alphabetically by name of owner.

Box 5.

SERIES 8 PINE SPUR PLATS FOR PROPERTY MAP. 1937. 1.5 LF.

Sketches of property boundaries in the Pine Spur area. Includes a key map (no scale) of the Pine Spur area. Also includes many unidentified drawings.

Not arranged.

Box 6.

SERIES 9 PINE SPUR MAIN TRAVERSE COMPUTATIONS. CA. 1936.
1.5 LF.

Main traverse computations show line numbers, course, distance, sine, cosine, +east, -west, +north, -south, sum of north and south, sum of east and west, and point number.

Not arranged.

Box 7.

SERIES 10 CUMBERLAND KNOB APPRAISAL REPORTS. 1935. 1 IN.

Appraisal reports by Sam Weems for the Cumberland Knob area. Reports identify the owner of the property and itemize the value of all land, timber, and buildings associated with the land.

Not arranged.

Box 8.

RG 6: OLD LAND ACQUISITION FILES

SERIES 11 CUMBERLAND KNOB PROPERTY MAPS. 1935. 2 IN.

Property maps outlining tracts and owners of tracts along Parkway route. Includes a pen and ink drawing (Cat. No. BLRI-8060) as well as blue line and negative reproductions.

Arranged chronologically.

Box 8.

SERIES 12 CORRESPONDENCE REGARDING CUMBERLAND GAP NATIONAL PARK.
1937-1938. 1 IN.

Correspondence file of Kenneth C. McCarter, Landscape Architect, regarding the establishment of a national park in the Cumberland Gap (Cumberland Falls) area. Most of the correspondence is between McCarter and various National Park Service officials. Many of the letters refer to a report on the proposed park, however, a copy of the report is not available. Mr. McCarter's office was located at the regional office in Richmond, Virginia.

Arranged chronologically.

Box 8.

SERIES 13 SMART VIEW PROPERTY MAPS. 1937. 1 IN.

Property maps outlining tracts and owners of tracts along Parkway route. Includes a pen and ink drawing (Cat. No. BLRI-8061) as well as negative reproductions.

Arranged chronologically.

Box 8.

SERIES 14 HAYCOCK MOUNTAINS ACQUISITION FILES. 1935. 1 IN.

Tract ownership data for land acquired along Parkway route in Haycock Mountains area. Occasional correspondence regarding the acquisition of particular tracts are included as are occasional appraiser's notes.

Arranged by name of owner.

Box 8.

SERIES 15 ROCKY KNOB ACCEPTANCE LETTERS. 1936. 2 IN.

Letters from the Land Utilization Division of the Resettlement Administration notifying land owners that the United States Government had accepted the owner's offer to sell land. The name of the owner, the amount of land offered, location, and price per acre are given. Correspondence among government officials, including Sam Weems, Project Manager, regarding the acquisition of land in the Rocky Knob area are also included.

Arranged chronologically.

Box 9.

RG 6: OLD LAND ACQUISITION FILES

SERIES 16 ROCKY KNOB ACQUISITION FILES - TRACT 29. 1935-1938,
1941. 2 IN.

Correspondence regarding efforts to purchase land in Tract 29 which once belonged to Arthur T. Harmon and later purchased by S.G. Proffit. Many of the correspondence are between government officials and the Federal Land Bank, although some are with Sam Weems. Also includes tract ownership data forms, offers to sell lands to the United States, and appraisal reports.

Arranged chronologically.
Box 9.

SERIES 17 ROCKY KNOB ACQUISITION FILES - TRACT 8 - W.M. HARMAN.
1935-1938. 2 IN.

Correspondence regarding efforts by W.M. Harman to extend timber rights on Tract 8 which was owned by T.G. Moore before purchased for the Parkway. Many of the correspondence are with government officials although some are with W.M. Harman. Also includes tract ownership data forms, offers to sell lands to the United States, appraisal reports, and a directory of stumpage and log prices for the year 1935. See also Series 18.

Arranged chronologically.
Box 9.

SERIES 18 ROCKY KNOB ACQUISITION FILES - TRACT 8 - T.G. MOORE.
1925-1938. 1 IN.

Correspondence regarding efforts by W.M. Harman to extend timber rights on Tract 8 which was owned by T.G. Moore before purchased for the Parkway. Also correspondence regarding problems of transferring ownership of the land due to an unrecorded deed. Many of the correspondence are with government officials. Also includes tract ownership data forms, offers to sell lands to the United States, appraisal reports, and a lease agreement. See also Series 17.

Arranged chronologically.
Box 10.

SERIES 19 ROCKY KNOB PROPERTY MAPS. 1936. 1 IN.

Property maps outlining tracts and owners of tracts along Parkway route in Rocky Knob area. Includes a pen and ink drawing (Cat. No. BLRI-8062) and blue line copies as well as negative reproductions. Some of the negative reproductions were copied in reverse.

Arranged chronologically.
Box 10.

RG 6: OLD LAND ACQUISITION FILES

SERIES 20 LAND DEEDS - GEORGE CAUDILL. 1891-1927. 1 IN.

Deeds for property owned by George Caudill in North Carolina Tract 8. Earlier deeds trace the land ownership history of the Caudill lands.

Arranged chronologically.

Box 10.

SERIES 21 THE BLUFFS APPRAISAL REPORTS. 1935. 1 IN.

Miscellaneous appraisal reports regarding the Bluffs area, completed by Sam Weems. Attached to reports are inventories of buildings, orchards, and land features (springs, etc.).

No arrangement.

Box 10.

SERIES 22 THE BLUFFS PARKWAY RIGHT-OF-WAY. 1936-1937. 1 IN.

Correspondence and traverse notes on the right-of-way in the Bluffs area. Some Tract Ownership Data forms are also included.

Arranged chronologically.

Box 10.

SERIES 23 THE BLUFFS FIELD NOTES. 1936. 1 IN.

Sam Weems' notes, including plot drawings, tract lists, tract ownership data forms, and various handwritten notes concerning the surveying and appraisal of land in the Bluffs area.

Arranged chronologically.

Box 10.

SERIES 24 THE BLUFFS PROPERTY MAPS. 1936, 1938. 3 IN.

Property maps outlining tracts and owners of tracts along Parkway route in the Bluffs area. Includes pen and ink drawings of the Bluffs area (Cat. No. BLRI-8063), Mandy Osborne's property (Cat. No. BLRI-8064), George Cleary's property (Cat. No. BLRI-8065), and Eli Richardson's property (Cat. No. BLRI-8066). Also includes blue line copies as well as negative reproductions.

Arranged chronologically.

Box 11.

SERIES 25 THE BLUFFS TRAVERSE LINES AND PROPERTY CORNERS. 1936.
3 IN.

Descriptions of tracts in the Bluffs area listing station, bearing, cosine, sine, latitude, and departure. Some descriptions cite book and page number references.

Arranged by page numbers.

Box 11.

RG 6: OLD LAND ACQUISITION FILES

SERIES 26 THE BLUFFS TRACTS PLOTTED. 1936. 3 IN.

Descriptions of tracts plotted showing station, bearing, cosine, sine, latitude, and departure.
Arranged by tract number.
Box 12.

SERIES 27 THE BLUFFS VOIDED TRACT SURVEYS. 1936. 1 IN.

Descriptions of tracts showing station, bearing, cosine, sine, latitude, and departure. "Void" written in red on sheets.
No arrangement.
Box 12.

SERIES 28 THE BLUFFS MISCELLANEOUS. 1936-1937. 2 IN.

Includes: Copy of a drawing of Dam #2, Bluffs Area Water Reservoir, Blue Ridge Parkway; Acquisition schedule and tabulation of exterior corners and calls, Blue Ridge Recreational Demonstration Project, LP-NC-11; List of tracts surveyed; Letters to C.G. Fender and others from Sam Weems regarding tract description transmittals; Lists of tracts to be surveyed; A comparison of traverse notes between Blue Ridge Parkway and North Carolina State surveys.
No arrangement.
Box 12.

SERIES 29 PINNACLES OF DAN CORRESPONDENCE FILES. 1934-1938, 1941. 1 LF.

Correspondence, telegrams, and memorandums regarding the construction of the Pinnacles Hydro-Electric Plant in Danville, Virginia. Much of the correspondence involves Stanley W. Abbott, Resident Landscape Architect, and J.R.A. Hobson, Jr., Project Engineer, regarding the development of the Pinnacles area, the effect of the plant on the Parkway, and connecting roads with the Blue Ridge Parkway. Occasional maps, drawings, and reports are also included.
Arranged chronologically.
Box 13-14.

SERIES 30 PINNACLES HYDRO-ELECTRIC PROJECT CONTRACT. 1935. 2 IN.

Contract, proposal, specifications, and construction regulations for construction of a power house, penstock grade, and related structures as part of the Pinnacles Hydro-Electric Plant.
Contract Number 17.
Box 15.

RG 6: OLD LAND ACQUISITION FILES

SERIES 31 REPORT ON THE CONSTRUCTION OF KIBLER ROAD. CA. 1936.
1 IN.

"A Report in Words and Pictures of the Construction of the Kibler Road" for the Danville (Pinnacles) Hydro-Electric Project. The report was compiled by Ralph D. Patterson, resident landscape architect for the Public Works Administration. Kibler road was designed as an access road to the power plant. The report documents the construction of the road and the efforts to prevent unnecessary damage to the landscape. The majority of the report consists of photographs which are captioned.

Box 15.

SERIES 32 REPORT ON SCENIC CONSERVATION AT THE DANVILLE
(PINNACLES) HYDRO-ELECTRIC PLANT. 1938. 1 IN.

Report submitted to the Project Engineer by Hunter H. Burton, Conservation Engineer, outlining measures taken to preserve the landscape in connection with the proposed development of the Blue Ridge Parkway. Much of the report consists of photographs which are captioned. A map of the area is also included.

Box 15.

SERIES 33 REPORT TO THE SECRETARY OF THE INTERIOR ON CONSERVATION
AT THE DANVILLE (PINNACLES) HYDRO-ELECTRIC PLANT.
1936. 1 IN.

Report submitted by Stanley W. Abbott, Resident Landscape Architect, through the Director of the National Park Service. The report consist primarily of photographs which are captioned.

Box 15.

SERIES 34 PROPERTY DATA - DANVILLE (PINNACLES) HYDRO-ELECTRIC
PLANT. 1933. 1 IN.

Handwritten lists of owners of land associated with the Danville (Pinnacles) Hydro-Electric Plant.

Box 15.

RECORD GROUP 7

RECORDS OF THE RESIDENT LANDSCAPE ARCHITECT
(CAT. NO. BLRI-7987)

The Resident Landscape Architect provides professional landscape architectural services for the Blue Ridge Parkway and is the principal advisor to the Superintendent concerning land acquisition and landscape architectural consideration in Parkway development, maintenance, management, and protection. As such, the Resident Landscape Architect develops long range plans to preserve the scenic corridor of the Parkway and to correct damage brought about by construction, visitor use, or natural phenomena. Other duties include: Preparation of land use maps; Development of studies regarding utility line crossings, Parkway accesses, scenic easements, and special use permits; Liaison with federal, state, and local government officials concerning surveys and land use planning; Promoting the purchase of inholdings; Coordinating the preparation of legal descriptions of lands for land acquisition programs.

The Blue Ridge Parkway has had ~~four~~^{six} Resident Landscape Architects: Stanley W. Abbott (1933-1948), Edward H. Abbuehl (1948-1957), Arthur H. Beyer (1957-1963), and Robert A. Hope (1963-present).¹⁹⁹⁴ Kenneth C. McCarter served as Resident Landscape Architect from January 1944 to November 1945 while Stanley Abbott was on military furlough. - William Orr (1995-) Larry Hultquist

The records in this group are records maintained in the Resident Landscape Architect's office. They contain correspondence and other documents of the Superintendent related to land use and land acquisition as well as files created in the daily duties of the Resident Landscape Architect. Many of the records relate to early land acquisition programs and include records of Stanley W. Abbott, Resident Landscape Architect (1933-1937) and Acting Superintendent (1937-1944). Several record series concern the extension of the Parkway into Georgia and South Carolina. Records of the Parkway's Agronomist and Realty Specialist are also included in this record group. The records in this group date primarily during the period 1934-1985 although a small number of tract boundary descriptions for 1914-1927 are also included. The records comprise 47.5 linear feet. Additional records relating to land acquisition can be found in RG 6 Series 1 - Series 18.

RG 7: RESIDENT LANDSCAPE ARCHITECT

RECORD SERIES

SERIES 1 ACQUISITION OF LANDS - POLICY AND PROCEDURES.
1934-1971. 6 IN.

Correspondence with the regional office and Washington, D.C. office concerning land acquisition policies for the Blue Ridge Parkway and for the National Park Service in general. Some of the correspondence relate to land acquisition procedures used in other parks which might be adapted for use along the Parkway. Some correspondence regarding legal opinions on land acquisition and Parkway right-of-way in cemeteries are also included. See also Series 18.

Arranged chronologically.
Box 1.

SERIES 2 ACQUISITION OF LANDS - BOUNDARY ADJUSTMENTS.
1936-1980. 6 IN.

Correspondence, memos, surveys, and reports concerning Parkway boundary with private or other federal lands and changes in Parkway boundary. Some of the correspondence relate to a joint boundary study with the United States Forest Service. Includes reports on boundary surveys and the marking of Parkway boundaries. Also includes a memorandum of understanding with the United States Forest Service regarding planning, locating, constructing, and administering the Blue Ridge Parkway across Pisgah and Nantahala National Forests land in North Carolina and Chattahoochee National Forest land in Georgia.

Arranged chronologically.
Box 2.

SERIES 3 ACQUISITION OF LANDS - RIGHT-OF-WAY THRU FEDERAL
HOLDINGS. 1935-1981. 1 LF.

Correspondence, property tract maps, and memorandums of understanding concerning Parkway right-of-way through federal lands held by the United States Forest Service. Most of the correspondence concern the transfer of lands between the Blue Ridge Parkway and the U.S. Forest Service. Also includes a draft progress report on recreation and service areas prepared by Stanley Abbott (1938).

Records are grouped by subject in the following order: U.S. Forest Service (1935-1972); George Washington National Forest (1937-1970); Jefferson National Forest (1938, 1945-1968); Pisgah National Forest (1970-1981); North Carolina National Forests (1937-1969). Records are arranged chronologically within each group.

Box 3-4.

RG 7: RESIDENT LANDSCAPE ARCHITECT

SERIES 4 ACQUISITION OF LANDS - RIGHT-OF-WAY. 1934-1948.
2.5 LF.

Correspondence, telegrams, and memos regarding the acquisition of lands to complete Parkway right-of-way. Many correspondence relate to the acquisition of scenic easements and the use of Parkway right-of-way by the U.S. Forest Service and by the Virginia and North Carolina Highway Commissions. Some correspondence regarding efforts to complete right-of-way maps are included. Other correspondence relate to alterations of Parkway right-of-way, construction of right-of-way and route of the Parkway, affect of Parkway right-of-way on local residents, problems with deeds, road access to Parkway, grade crossings, power lines, and telephone line crossings. Much of the correspondence are between Stanley Abbott, H.E. Van Gelder, and various right-of-way agents. Also included in this series are agreements and guarantees with the state highway commissions, reports of right-of-way engineers, land reservations, cooperative agreements, and lists of approved easements.

Records are grouped by subject in the following order: Right-of-Way - General (1934-1948); Right-of-Way - North Carolina (1935-1939); Right-of-Way - Virginia (1935-1938). Records are arranged chronologically within each group.

Box 5-9.

SERIES 5 ACQUISITION OF LANDS - PINE SPUR. 1935-1960. 6 IN.

Correspondence, telegrams, and memos concerning the acquisition of lands in the Pine Spur area. Much of the correspondence is between Stanley Abbott, Sam Weems, and J.H. Poff, attorney. Also includes abstracts of titles.

Arranged chronologically.

Box 10.

SERIES 6 ACQUISITION OF LANDS - HUMPBACK ROCKS. 1934,
1940-1957. 1 IN.

Correspondence concerning acquisition of lands in the Humpback Rocks area. Much of the correspondence is between Stanley Abbott, C.M. Granger, Assistant Chief of the U.S. Forest Service, and Conrad L. Wirth, Supervisor of Land Planning for the National Park Service.

Arranged chronologically.

Box 11.

RG 7: RESIDENT LANDSCAPE ARCHITECT

SERIES 7 ACQUISITION OF LANDS - SMART VIEW. 1935-1939. 0.5 IN.

Correspondence concerning deeds and tract purchases in the Smart View area. Much of the correspondence is between Stanley Abbott and Sam Weems. Also includes lists of land parcels.

Arranged chronologically.

Box 11.

SERIES 8 ACQUISITION OF LANDS - TOMPKINS KNOB. 1938-1941.
0.5 IN.

Correspondence concerning the acquisition of land in the Tompkins Knob area. Much of the correspondence is between Stanley Abbott, Sam Weems, and J.P. Dodge, Senior Claims Adjuster for the North Carolina State Highway and Public Works Commission.

Arranged chronologically.

Box 11.

SERIES 9 ACQUISITION OF LANDS - ROCKY KNOB. 1936-1966. 3 IN.

Correspondence concerning the acquisition of land in the Rocky Knob area and curative matters regarding land titles. Also includes property tract maps and lists of land parcels.

Arranged chronologically.

Box 11.

SERIES 10 ACQUISITION OF LANDS - CUMBERLAND KNOB. 1936-1940.
1 IN.

Correspondence concerning the acquisition of land in the Cumberland Knob area. Much of the correspondence is between Sam Weems and Howard B. Shaw, Jr., Senior Project Superintendent with the National Park Service. Also includes chronologies of acquisition actions in the area.

Arranged chronologically.

Box 11.

SERIES 11 ACQUISITION OF LANDS - JULIAN PRICE ESTATE. 1948-1961.
3 IN.

Correspondence concerning the acquisition of the Julian Price Memorial Park. Much of the correspondence is with North Carolina Representative R.L. Doughton. Also includes newspaper articles concerning acquisition of the estate by the Parkway.

Arranged chronologically.

Box 12.

RG 7: RESIDENT LANDSCAPE ARCHITECT

SERIES 12 ACQUISITION OF LANDS - CRABTREE MEADOWS. 1940-1950.
3 IN.

Correspondence concerning the acquisition of land in the Crabtree Meadows area. Much of the correspondence is with United States Forest Service officials and concerns the transfer of U.S. Forest Service land to the Blue Ridge Parkway. Also includes a memorandum of agreement between the U.S. Forest Service and the Blue Ridge Parkway.

Arranged chronologically.
Box 12.

SERIES 13 ACQUISITION OF LANDS - THE BLUFFS. 1936-1953. 6 IN.

Correspondence concerning the acquisition of land in the Bluffs area. Includes letters from landowners wanting to sell their land to the Parkway.

Arranged chronologically.
Box 13.

SERIES 14 ACQUISITION OF LANDS - LINVILLE FALLS. 1938,
1945-1965. 6 IN.

Correspondence concerning the acquisition of land in the Linville Falls area. Much of the correspondence is with Horace Albright regarding the purchase and donation of the Linville Falls property by John D. Rockefeller, Jr. The land was purchased from Mrs. Guila Luginbuhl through a \$100,000 donation by Mr. Rockefeller. Other correspondence relate to appraisal of the land and title insurance. Some correspondence with Conrad Wirth, Director of the National Park Service. Also includes several newspaper clippings concerning the donation of the land.

Arranged chronologically.
Box 14.

SERIES 15 ACQUISITION OF LANDS - MOSES H. CONE RECREATIONAL
PARK. 1947-1971. 6 IN.

Correspondence and newspaper clippings regarding the acquisition of Flat Top Manor and Moses H. Cone Memorial Park. Much of the early correspondence relates to clearing and transfer of title to the property. Later correspondence relate to the annual donation by the Moses H. Cone Memorial Hospital for maintenance of the park. A copy of a plaintiff appellant's brief - Moses H. Cone Memorial Hospital v. Bernard M. Cone, et. al. regarding clearing of title to Moses H. Cone Memorial Park property is included. Also includes a copy of the deed transferring title of Flat Top Manor estate from Moses H. Cone Memorial Hospital to the U.S. Government to be administered by the Blue Ridge Parkway (Cat. No. BLRI-8047). Various other legal documents and proposals

RG 7: RESIDENT LANDSCAPE ARCHITECT

are included along with reports to accompany the master plan for the Moses H. Cone Memorial Park and Julian Price Estate.

Arranged chronologically.

Box 15.

SERIES 16 ACQUISITION OF LANDS - GRANDFATHER MOUNTAIN. 1935, 1939, 1942-1952. 6 IN.

Correspondence regarding efforts to acquire land around Grandfather Mountain and the Linville Gorge area. Much of the correspondence relates to efforts by Harlan P. Kelsey, private landscape architect, and others to acquire Grandfather Mountain as a national park. Also includes an agreement with the United States Forest Service concerning management of the Grandfather Mountain and Linville Gorge Special Area.

Arranged chronologically.

Box 16.

SERIES 17 ACQUISITION OF LANDS - PEAKS OF OTTER. 1914-1956. 1 LF.

Correspondence with land owners and government officials concerning acquisition of land in the Peaks of Otter area. Includes a copy of the deed transferring title of Peaks of Otter land from Peaks of Otter, Inc. to the U.S. Government (Cat. No. BLRI-8048). Also includes copies of descriptions of tract boundaries compiled by B.M. Higginbotham, et. al. (1914-1929).

Arranged chronologically.

Box 17-18.

SERIES 18 ACQUISITION OF LANDS - HOLDINGS (OTHER THAN FEDERAL). 1950-1963, 1972-1974. 3 IN.

Correspondence with private land owners and government officials regarding the use and improvement of Parkway lands and scenic easements. Also includes newspaper clippings regarding land use policies and procedures. See also Series 1.

Arranged chronologically.

Box 19.

RG 7: RESIDENT LANDSCAPE ARCHITECT

SERIES 19 ACQUISITION OF LANDS - HOLDINGS - LAND OWNERSHIP RECORDS. 1943-1966. 3 IN.

Land Ownership Record forms (NPS L-1) for land purchases and exchanges. Most forms are accompanied by cover letters from the Assistant Regional Director to the Superintendent of the Blue Ridge Parkway. Cover letters describe action taken in each case. Forms document the acquisition of land, legal descriptions and physical characteristics of land, and method acquired. Some forms are accompanied by copies of plat maps. Also includes Land Acquisition Program Priority Lists (NPS L-4).

Arranged chronologically.
Box 19.

SERIES 20 ACQUISITION OF LANDS - PUBLIC COMMENTS ON 1980 LAND ACQUISITION PLAN. 1980. 3 IN.

Correspondence with individual land owners and property owners associations concerning the proposed land acquisition plan for the Blue Ridge Parkway. Many letters are in response to the Superintendent's request for comments on the proposed plan. Also includes a statement by the Patrick County Board of Supervisors, letters from congressional representatives, and photocopies of newspaper clippings.

Arranged chronologically.
Box 20.

SERIES 21 ACQUISITION OF LANDS - NEWSPAPER ARTICLES AND NEWS RELEASES. 1978-1980. 3 IN.

Newspaper clippings and news releases from the Blue Ridge Parkway which document events, public opinions, and public hearings related to Parkway land acquisition policies and practices.

Arranged chronologically.
Box 20.

SERIES 22 ACQUISITION OF LANDS - GENERAL CORRESPONDENCE FILE. 1938-1981. 2.5 LF.

Correspondence, memos, and telegrams with government officials and private land owners concerning the Parkway's land acquisition program. Many letters express land owners' concern over land acquisition practices. Other topics included acquisition of land at Wintergreen and at Stone Mountain, land acquisition under the Land and Water Conservation Fund, and public meetings held to discuss land acquisition programs. Reports by the Comptroller General regarding federal land acquisitions, Superintendent's reports to the Regional Director, land acquisition data, estimated land acquisition forms, and a Land Acquisition Program Briefing Statement (1979) are included. Also included are

RG 7: RESIDENT LANDSCAPE ARCHITECT

newspaper clippings concerning land acquisition policies and public hearings.

Arranged chronologically.

Box 21-25.

SERIES 23 ACQUISITION OF LANDS - VIRGINIA. 1938-1972. 6 IN.

Correspondence regarding the acquisition of lands from the Commonwealth of Virginia and individual land owners in Virginia. Much of the correspondence is with federal and state government officials. Includes a list of property owners affected by Blue Ridge Parkway land acquisitions (1938). Also includes copies of deeds and title insurance documents.

Arranged chronologically.

Box 26.

SERIES 24 ACQUISITION OF LANDS - STONE MOUNTAIN. 1973-1977.
4 IN.

Correspondence and newspaper clippings regarding the proposed acquisition of Stone Mountain, North Carolina. Includes a position statement on the land acquisition program and a chronological history of proposed acquisition of lands adjoining the Parkway near Stone Mountain State Park.

Arranged chronologically.

Box 27.

SERIES 25 GEORGIA EXTENSION - GENERAL CORRESPONDENCE. 1961-1976,
1979, 1983. 3.5 LF.

Correspondence with the Denver Service Center and with private citizens regarding the extension of the Blue Ridge Parkway into Georgia. Many letters from private individuals concern the pros and cons of the proposed extension. Correspondence regarding air quality and noise impact analysis are included. Also included are a summary of alternatives to the proposed extension, briefing statements, and newspaper clippings. See also RG 5 Series 12.

Arranged chronologically.

Box 28-34.

SERIES 26 GEORGIA EXTENSION - LEGISLATION. 1961, 1963,
1965-1971. 1 LF.

Memorandums and correspondence with public officials, National Park Service personnel, and congressmen regarding legislative authorization for the extension of the Blue Ridge Parkway into Georgia. Also includes a report to Congress on the North Carolina-Georgia extension of the Blue Ridge Parkway (June 1963), a memorandum of understanding with the U.S. Forest Service for

RG 7: RESIDENT LANDSCAPE ARCHITECT

the extension into national forests, and a "Background Book" on the proposed extension for the 90th Congress. Newspaper clippings regarding the proposed extension are included as well.

Arranged chronologically.
Box 35-36.

SERIES 27 GEORGIA EXTENSION - SURVEYS AND LOCATION STUDIES.
1936-1939. 1941-1946, 1953, 1959-1971. 2 LF.

Correspondence with state government officials, federal officials, and commercial company representatives regarding the proposed route of the Blue Ridge Parkway Extension. Also included are inquiries from property owners along the proposed route, development plans for the extension, press releases, newspaper clippings, and reports from study committees. Many of the correspondence concern the location of an AT&T microwave relay tower and the route of Interstate-75.

Arranged chronologically.
Box 37-40.

SERIES 28 GEORGIA EXTENSION - DEVELOPMENT PLAN. 1965-1971.
6 IN.

Primarily correspondence relating to the development of Tanasee Bald, Panthertown, and Mt. Oglethorpe along the proposed route of the Blue Ridge Parkway Extension. Also includes reports, studies, copies of newspaper clippings, a design analysis report, and a master plan report study for the Blue Ridge Parkway Extension. See also RG 5 Series 12.

Arranged chronologically.
Box 41.

SERIES 29 GEORGIA EXTENSION - APPALACHIAN TRAIL. 1962-1964,
1969-1973. 6 IN.

Correspondence with Appalachian Trail Conference executives and with members of other outdoor recreation organizations regarding conflict and interference of the Blue Ridge Parkway Extension route with the Appalachian Trail. By an agreement dated March 1964, the Appalachian Trail was to be altered so as to accommodate the extension.

Arranged chronologically.
Box 42.

RG 7: RESIDENT LANDSCAPE ARCHITECT

SERIES 30 GEORGIA EXTENSION - REPORTS AND STUDIES. 1966-1976.
1 LF.

Copies of reports and studies along with correspondence with various environmental groups, congressmen, and academic institutions. Newspaper clippings regarding reports and studies are included as well. See also Series 36.

Records are arranged in the following order: "A Master Plan for the Proposed Blue Ridge Parkway Extension" (BLRI-8117); "Location of A South Carolina Highway 11 - Blue Ridge Parkway Connecting Highway" (1972); Environmental Impact Statements (1971-1974); "Position Paper on Extension of the Blue Ridge Parkway into South Carolina" (1976); Data Summary (N.D.); River Basin Studies (1966-1971); Miscellaneous.

Box 43-44.

SERIES 31 GEORGIA EXTENSION - SECTION FILES. 1970-1980. 10 IN.

Correspondence regarding land acquisition and right-of-way acquisition along the proposed extension route. Many correspondence are with land owners along the proposed route. Letters from land owners usually express support or opposition to the proposed extension. Several letters with U.S. Department of Treasury officials regarding the development of route plans and alternate routes are also included.

Arranged by Parkway section number.
Box 45-46.

SERIES 32 GEORGIA EXTENSION - SOUTH CAROLINA. 1976. 2 IN.

Includes task directives which provide management and administrative guidance for evaluations and engineering studies. Also includes clippings of newspaper articles which describe studies and support or oppose the Parkway extension. Newspaper clippings are primarily from South Carolina newspapers.

Arranged chronologically.
Box 46.

SERIES 33 RECONNAISSANCE. 1935-1948. 6 IN.

Correspondence with National Park Service officials and state and federal highway department officials regarding the route of the Blue Ridge Parkway in Virginia and North Carolina. Some of the correspondence describe roadway features along the proposed route, including all road crossings. Many of the correspondence are between the Superintendent and the Landscape Architect regarding the route of the Parkway. Correspondence between Stanley Abbott and Thomas C. Vint, Chief Architect for the National Park Service are included. Also included are alignment reports, flagging reports, and a report on the location of

RG 7: RESIDENT LANDSCAPE ARCHITECT

the Parkway through the Cherokee Indian Reservation (1935).
Arranged chronologically.
Box 47.

SERIES 34 MONTHLY REPORTS. 1942-1955. 1 LF.

Monthly narrative reports of the Resident Landscape Architect. Reports describe work done on Parkway construction, progress on projects, major events, plans concerning land acquisition and use, major building and road improvements, concessions projects, mapping and survey projects, and physical improvements. Progress charts and photographs accompany some reports. Includes reports by Stanley Abbott, K.C. McCarter, and Edward H. Abbuehl. Monthly reports of Project Landscape Architect Wilhelm on the Great Smoky Mountains National Park and the Foothills Parkway are attached to early Blue Ridge Parkway reports.

Arranged chronologically.
Box 48-49.

SERIES 35 LAND MANAGEMENT REPORTS. 1939-1942, 1944-1967. 6 IN.

Monthly narrative reports from Assistant Agronomist D.W. Levandowsky, Agronomist William O. Hooper, and Agronomist A. Herbert Huntoon. Reports document activities of the Agronomist including public contacts, leases, land acquisition and appraisals, and soil and moisture conservation measures.

Arranged chronologically.
Box 50.

SERIES 36 REPORTS. 1974-1985. 2.5 LF.

Miscellaneous reports primarily dealing with land acquisition and the economic impact of the Parkway. Many reports deal with the Blue Ridge Parkway Extension. See also Series 30.

Reports are arranged chronologically by year in the following order: "Parkways: A Manual of the Revised Requirements, Instructions and Information Relating to National Parkways for Use in the National Park Service" (1938); "Report to Messrs. Spelman and Vint on Proposed Highway By-Pass of Yonahalosse Trail (US 221)" (1938); "Planning the Complete Landscape Architect Development: The Problem and the Program" (1939); "Advance Survey and Planning Program for National Park Service Region One" (1944); "Western North Carolina Associated Communities Report on the Blue Ridge Parkway" (1947); "Blue Ridge Parkway: Interpretive Plan" (1964); "Development Concept: Blue Ridge Parkway - Julian Price Memorial Park" (1971); "Data for Environmental Analysis for the Blue Ridge Parkway Extension: North Carolina" (1973); "Blue Ridge Parkway Access Impact Study, Section 1-W" (1974); "Alternative Line Evaluations Report: Blue Ridge Parkway

RG 7: RESIDENT LANDSCAPE ARCHITECT

Extension" (1974); "Blue Ridge Parkway Visitor-Use Study Evaluation and Recommendations" (1975); "Blue Ridge Parkway Statistics" (1975); "Review Comments on Alternatives: Blue Ridge Parkway Extension" (1975); "Environmental Assessment Workbook for Blue Ridge Parkway Extension North Carolina" (1975); "Blue Ridge Parkway Extension - North Carolina Public Workshops" (1976); "Environmental Analysis of the Proposed Blue Ridge Parkway Extension from Oconaluftee to Deep Creek Campground: Management Report No. 9, Volume I" (1976); "Preassessment Analysis Blue Ridge Parkway Extension North Carolina-Georgia" (1976); "A Study of the Blue Ridge Parkway Southern Extension Route" (1976); "Resource Management Plan: Blue Ridge Parkway" (1977); "Blue Ridge Parkway Visitor Characteristics and Recreation Experience Preferences" (1977); "Devil's Courthouse Trail: Milepost 422.4" (1977); "Richard Balsam Trail, Milepost 431: Rehabilitation Guidelines" (1977); "Land Acquisition Program Briefing Statement: Blue Ridge Parkway" (1979); "Economic Impacts of the Blue Ridge Parkway in Virginia and North Carolina" (1979); "Guidelines for Maintenance of Cemeteries Within the Boundary of the Blue Ridge Parkway" (1979); "Blue Ridge Parkway Statistical Abstract" (1980); "Blue Ridge Parkway Interpretive Plan: An Overview" (1980); "Campground Characteristics On and Along the Blue Ridge Parkway" (1980); "People of the Blue Ridge: A Socio-Cultural Assessment of Inholders Along the Blue Ridge Parkway" (1980); "Visitor Perceptions of a Blue Ridge Parkway Concession Operation: Mt. Pisgah Lodge" (1980); "Impacts of Adjacent Land Use on Blue Ridge Parkway Costs" (1980); "Land Acquisition Plan Draft Appendices: Blue Ridge Parkway" (1980); "Parkway Vista Study" (1982); "Results/1984 Concession Operated National Park Service Campgrounds, 1983-84 Pilot Program" (1984); "Boundary Management Plan: Blue Ridge Parkway" (1985).

Box 51-55.

SERIES 37 REALTY SPECIALIST'S REPORTS. 1970-1974. 1 IN.

Monthly reports of Realty Specialist William O. Hooper. Reports primarily concern land acquisition activities, including purchases, transfers, and clear of titles. Reports also describe encounters with land owners regarding selling of lands to the Blue Ridge Parkway.

Arranged chronologically.

Box 56.

SERIES 38 LAND USE - CASE STUDIES. 1975. 1 IN.

Two case study reports: "An Analysis of Adjacent Land Potentials, Blue Ridge Parkway, Floyd County, Virginia," for the New River Valley Planning District Commission prepared by the Land Architecture Program, Virginia Polytechnic Institute and State University (March 1975); and "Leisure and the Landscape -

RG 7: RESIDENT LANDSCAPE ARCHITECT

Phase Two Synthesis: A Program for Protecting the Recreational Integrity of the Blue Ridge Parkway Through External Land Use Management," by David M. Gaines (April 1975).

Arranged chronologically.

Box 56.

SERIES 39 APPALACHIAN NATIONAL PARKWAY: REPORT ON RECREATION AND SERVICES AREAS - TYPE AND SCOPE OF DEVELOPMENT PROPOSED. 1934. 2 IN.

Narrative discussion of recreational sites and activities planned along the Parkway followed by photographs of proposed recreation areas.

Box 56.

SERIES 40 RECREATION AREAS - PEAKS OF OTTER. 1966, 1970. 2 IN.

Reports and feasibility studies, including photographs, regarding efforts to develop the Peaks of Otter, Virginia area into a winter recreation facility and ski area.

Arranged chronologically.

Box 56.

SERIES 41 RECREATIONAL AREAS. 1935-1960. 6 IN.

Inventory of recreation resources along the Parkway. The inventory describes each recreational area proposed or constructed along the Parkway. Some correspondence regarding the costs of developing recreational areas are also included.

Arranged chronologically.

Box 57.

SERIES 42 GEOGRAPHIC PLACE NAMES AND AREA TERMINOLOGY. 1936-1972. 8 IN.

Correspondence with area residents regarding place names on Blue Ridge Parkway signs. Many correspondence concern the proper form of place names, the changing of place names, the naming of mountains and other physical features, and the naming of facilities and structures along the Blue Ridge Parkway. Some newspaper clippings regarding place names are also included.

Arranged chronologically.

Box 58-59.

RG 7: RESIDENT LANDSCAPE ARCHITECT

SERIES 43 WATER MATTERS - SITE STUDIES. 1970-1971. 2 IN.

Two reports which analyze the topographic and geologic conditions of the area, outline well construction, evaluate quality of water, and offer specific recommendations.

The reports are arranged in the following order: "Supply Wells for the Americana Project, Blue Ridge Parkway North Carolina," by Edwin O. Floyd (1970); and "Supply Wells for the Blue Ridge Parkway in North Carolina at sites in: Moses Cone Memorial Park, Doughton Park, Linville Falls," by C.E. Simmons (1971).

Box 59.

SERIES 44 PROPOSED AREAS - SOUTHERN APPALACHIAN NATIONAL PARK ARBORETUM. 1946. 2 IN.

Correspondence of Stanley Abbott, Sam Weems, and Harlan P. Kelsey regarding the establishment of the Southern Appalachian National Arboretum. Some newspaper clippings concerning the proposed arboretum are also included.

Arranged chronologically.

Box 59.

SERIES 45 PROPOSED AREAS - MT. MITCHELL NATIONAL PARK. 1938-1979. 1 LF.

Correspondence, task directives, feasibility studies, and newspaper clippings concerning a study to make Mt. Mitchell State Park and surrounding areas into a national park. Some correspondence regarding the construction of a spur road from the Blue Ridge Parkway to Mt. Mitchell State Park are also included.

Arranged chronologically.

Box 60-61.

SERIES 46 PARKWAY AND INTERSTATE HIGHWAY CONNECTIONS. 1954, 1958-1975. 1 LF.

Correspondence and newspaper clippings relating to Parkway intersections with Interstate-77, Interstate-64, and Interstate-40. Many of the correspondence are with state highway officials and concern the construction and design of intersections.

Arranged chronologically.

Box 62-63.

SERIES 47 ENVIRONMENTAL IMPACT - APPALACHIAN POWER CO. (APCO) - STATEMENTS AND STUDIES. 1972-1976, 1978-1982. 2 LF.

Correspondence with private individuals and congressmen regarding plans of Appalachian Power Company (APCO) to construct a 765 KV transmission line across the Blue Ridge Parkway near

RG 7: RESIDENT LANDSCAPE ARCHITECT

milepost 160 in Floyd County, Virginia. Copies of newspaper clippings and legal documents regarding the issue are also included.

Arranged chronologically.

Box 64-67.

SERIES 48 ENVIRONMENTAL IMPACT - APPALACHIAN POWER CO. (APCO) -
NEWS RELEASES AND PRESS CLIPPINGS. 1974-1982. 6 IN.

News Releases and press clippings regarding Appalachian Power Company's right-of-way impact statement for the construction of a 765 KV transmission line across the Blue Ridge Parkway near milepost 160 in Floyd County, Virginia.

Arranged chronologically.

Box 68.

SERIES 49 ENVIRONMENTAL IMPACT - APPALACHIAN POWER CO. (APCO) -
PUBLIC COMMENTS. 1978-1981. 2 LF.

Letters from private individuals and congressional representatives regarding Appalachian Power Company's plans to construct a 765 KV transmission line across the Blue Ridge Parkway near milepost 160 in Floyd County, Virginia. The letters usually express opinions for or against the construction of the power line, request information on construction plans, request copies of the Environmental Assessment Report, or request further study of the environmental impact of the line by the National Park Service. Some copies of newspaper clippings regarding the issue are also included.

Arranged chronologically.

Box 69-72.

SERIES 50 ENVIRONMENTAL IMPACT - APPALACHIAN POWER CO. (APCO) -
PUBLIC COMMENTS ON PREPARATION OF ENVIRONMENTAL IMPACT
STATEMENT. 1980-1981. 2 IN.

Letters from congressmen, businessmen, and private individuals to Secretary of the Interior Cecil D. Andrus and the Director of the Southeast Regional Office of the National Park Service. Letters primarily concern the preparation of an environmental impact statement for Appalachian Power Company's plans to construct a 765 KV transmission line across the Blue Ridge Parkway near milepost 160 in Floyd County, Virginia. Many letters concern the limitations placed on the environmental impact statement.

Arranged chronologically.

Box 73.

RG 7: RESIDENT LANDSCAPE ARCHITECT

SERIES 51 ENVIRONMENTAL IMPACT - APPALACHIAN POWER CO. (APCO) -
PUBLIC COMMENTS ON FINAL ENVIRONMENTAL IMPACT
STATEMENT. 1981. 2 IN.

Letters from congressmen, businessmen, and private individuals to the Superintendent of the Blue Ridge Parkway and the Director of the Southeast Regional Office of the National Park Service. Letters primarily express opinions on the final environmental impact statement for Appalachian Power Company's plans to construct a 765 KV transmission line across the Blue Ridge Parkway near milepost 160 in Floyd County, Virginia.

Arranged chronologically.

Box 73.

SERIES 52 ENVIRONMENTAL IMPACT - APPALACHIAN POWER CO. (APCO) -
STATE CORPORATION COMMISSION DOCUMENTS. 1974-1980.
2 IN.

Legal opinions, court orders, orders of testimony, and copies of the Virginia State Corporation Commission's decisions regarding Appalachian Power Company's plans to construct a 765 KV transmission line across the Blue Ridge Parkway near milepost 160 in Floyd County, Virginia. Also includes a statement of need for the 765 KV power line by the Appalachian Power Co.

Arranged chronologically.

Box 73.

SERIES 53 ENVIRONMENTAL IMPACT - APPALACHIAN POWER CO. (APCO) -
STUDIES AND REPORTS. 1974-1981. 2 LF.

Copies of environmental assessments, assessments of alternatives, visual impact analysis, and draft and final environmental impact statements concerning Appalachian Power Company's plans to construct a 765 KV transmission line across the Blue Ridge Parkway near milepost 160 in Floyd County, Virginia. Also includes a copy of the information base on the impact of the power line, environmental study documents, task directives for the environmental impact statement, various court documents, and an application by APCO for the power line filed with the National Park Service. Comments by Citizens for the Preservation of Floyd County are included as well.

Arranged chronologically.

Box 74-77.

SERIES 54 ENVIRONMENTAL IMPACT - APPALACHIAN POWER CO. (APCO) -
CORRESPONDENCE. 1980-1981. 3 IN.

Correspondence, primarily with attorneys and National Park Service officials, concerning archeological and cultural resource surveys along the Parkway. Some correspondence concern National

RG 7: RESIDENT LANDSCAPE ARCHITECT

Park Service procedures for surveys and cost estimates.
Arranged chronologically.
Box 78.

SERIES 55 ENVIRONMENTAL IMPACT - POWER LINE CROSSINGS. 1936,
1939-1949. 3 IN.

Correspondence with the Rural Electrification Administration
and the U.S. Forest Service regarding power and telephone line
crossings of the Blue Ridge Parkway and specifications for lines.
Arranged chronologically.
Box 78.

SERIES 56 LAND STATUS FILE. 1938-1974. 1 VOL. 6 IN.

Bound kardex file of land acquisition for the Blue Ridge
Parkway. For each section of the Parkway a history of deed trans-
fers is given along with the name of county and a summary of fee
simple and scenic easement acquisitions. Numerous remarks accom-
pany some entries. Land status for Parkway recreational areas
follow entries for sections.
Arranged by Parkway section number.
Box 79.

SERIES 57 MASTER PLANS - BLUE RIDGE PARKWAY. 1949-1976. 2 LF.

Copies of drafts and approved master plans. Also includes
copies of master plan outlines. See also RG 5 Series 7 - Series
11.

Arranged chronologically in the following order: Master Plan
Outline, 1949 (Cat. No. BLRI-8380); Master Plan Outline, 1960
(Cat. No. BLRI-8379); Master Plan, 1964 (See Cat. No. BLRI-8348);
Master Plan, 1971 (See Cat. No. BLRI-8349); Draft Master Plan,
1976 (Cat. No. BLRI-8378); Working Copies, 1952-1965.
Box 80-83.

SERIES 58 MASTER PLAN - MAPS. 1945-1976. 6 VOLS. 1.5 LF.
(CAT. NO. BLRI-8381)

Maps bound in loose leaf binders showing general development
plans for developed areas along the Parkway and maps of Parkway
section 1P through section 2Y. Some maps are annotated. See also
RG 5 Series 7 - Series 11.

Arranged in the following order: Volume 1, General Develop-
ment Plans; Volume 2, General Development Plans; Volume 3, Sec-
tions 1P-1W; Volume 4, Sections 2A-2F; Volume 5, Sections 2B-2L;
Volume 6, Sections 2J-2Y.
Box 84-85.

RG 7: RESIDENT LANDSCAPE ARCHITECT

SERIES 59 PARKWAY ROAD LOGS. N.D. 2 VOLS. 1.5 LF.
(CAT. NO. BLRI-8382)

Logs list mile post and station numbers, place names or developments, public and private road crossings, easements, elevation, and section number. Volume 1 includes road log for Virginia. Volume 2 includes road log for North Carolina. Bound in loose leaf binders.

Arranged by Parkway section number.
Box 86.

SERIES 60 LAND USE MAPS - NORTH CAROLINA. 1954-1963. 1 VOL.
1.5 LF. (CAT. NO. BLRI-8383)

Maps showing route of the Blue Ridge Parkway and descriptions of lands surrounding the Parkway including structures, land owners, roads, scenic easements, and physical and geological features of the land.

Arranged by Parkway section number.
Box 87.

SERIES 61 DESIGN AND CONSTRUCTION DIVISION CORRESPONDENCE. 1939,
1941, 1944-1952. 1 LF.

Correspondence with the Eastern Office of the Design and Construction Division of the National Park Service. Letters are primarily to/from the Superintendent, the Resident Landscape Architect, the Regional Director, state and federal highway officials, and Thomas C. Vint, Chief Landscape Architect of the National Park Service. Letters generally concern transfer of lands to the Blue Ridge Parkway, Parkway construction funding, building construction, development of plans and maps, land acquisition, and design and planning of the Parkway. The Resident Landscape Architect was the chief liaison with the Design and Construction Division.

Arranged chronologically.
Box 88-89.

SERIES 62 THE NORTH CAROLINA SECTION OF THE BLUE RIDGE PARKWAY
[IN PICTURES] VOLUME II. 1936. 1 VOL. 6 IN.
(CAT. NO. BLRI-8376)

Bound volume of photographs mounted on paper. Photographs are captioned. Photographs show roadway construction projects in progress and views along the Parkway route. Sections 2A through 2Y are shown. 76 photographs. 77 pages.

Arranged by Parkway section number.
Box 90.

RECORD GROUP 8

RECORDS OF THE DIVISION OF ADMINISTRATION
(CAT. NO. BLRI-8352)

The Division of Administration is one of four major administrative divisions within the Blue Ridge Parkway. The division is supervised by the Administrative Officer who reports to the Assistant Superintendent. The division has responsibility over various administrative functions of the Parkway including personnel management, procurement, contracting, and budget formulation and execution. The division is responsible for analysis and study of data for budget formulation, coordinating the preparation of operating programs and financial plans, adjudicating differences between program managers on problems relating to funding, and for developing systems and procedures for sound budget administration. In addition, the division is responsible for the management of all financial activities of the Parkway, including proper accountability of all fund resources, audits, and deposits.

The division's responsibilities for personnel functions include position classifications, leave administration, staffing, employee appraisal and counseling, employee development, labor management relations, equal opportunity employment, and all other personnel matters. All Parkway procurement, contracting, and property management operations are supervised by the division's Contracting Officer. This includes the preparation of bid documents, bid openings, awards, and contract administration.

The records in this group relate to the formulation, execution, and modification of the Parkway's annual budgets. The record group contains three record series comprising six linear feet of material dated 1979-1987.

RECORD SERIES

SERIES 1 BUDGET FORMULATION. 1981-1987. 6 IN.

Correspondence with the Southeast Regional Office regarding the Parkway's annual budget. Some correspondence deal with requests for reserve funds, submission of fiscal year program and budget plans, operating program requests for Parkway programs, and fiscal year cyclic, repair, and rehabilitation program requests. Budget briefing statements are also included.

Arranged chronologically.

Box 1.

RG 8: DIVISION OF ADMINISTRATION

SERIES 2 BUDGET EXECUTION. 1979-1987. 5 LF.

Correspondence regarding approval for expenditures of appropriated funds, program allocations, requests for reserve funds, cyclic maintenance program, commercial utilities inventory, budget ceilings, and equipment replacement programs. Also includes memorandums regarding budget reductions especially as a result of the Gramm-Rudman Act.

Arranged chronologically.

Box 2-11.

SERIES 3 BUDGET INCREASES/DECREASES. 1979, 1980, 1983-1985, 1987. 6 IN.

Completed Form 10-237, "Detail of Annual Operating Requirements." This form contains a description and justification for budget action (revisions). Also included in this series are memorandums between Parkway personnel and the Southeast Regional Office regarding budget modifications.

Arranged chronologically.

Box 12.

RECORD GROUP 9

RECORDS OF THE DIVISION OF RESOURCE MANAGEMENT AND VISITOR SERVICES (CAT. NO. BLRI-8353)

The Division of Resource Management and Visitor Services is one of four major administrative divisions within the Blue Ridge Parkway. This division is supervised by the Chief Ranger who reports to the Assistant Superintendent. The Chief Ranger formulates policies, programs, and directives regarding the management of Parkway resources and to assure that visitor needs are fully met.

The Chief Ranger supervises the activities of nine District Rangers in North Carolina and Virginia. Within the Division of Resource Management and Visitor Services are the offices responsible for Parkway safety, law enforcement, Parkway communications operations, and Parkway interpretation.

Bernard T. Campbell, the first Chief Ranger, was appointed in 1941. He was succeeded by Edwin M. Dale in 1950. The division was originally established as the Protection Division. By 1977 the title had changed to Resource Management and Visitor Protection. By 1983, the current division name was adopted.

The records in this group document the broad range of duties vested in the Division of Resource Management and Visitor Services. Several record series document traffic accidents and fatalities along the Parkway. Series 18 contains documentation compiled in response to a claim of liability filed by Loyd P. Bowman against the United States of America. The records in this group comprise 51.5 linear feet and are dated 1936-1988.

Records documenting the activities of the unit and district rangers will be found in Record Group 10. Records for the Interpretative Specialist will be found in Record Group 11.

RECORD SERIES

SERIES 1 ADVISORY BOARDS, FIELD. 1984. 1 IN.

Correspondence concerning the Blue Ridge Resource Management Advisory Board. Also includes a proposal for an economic study of the impact of the Blue Ridge Parkway on surrounding communities. The proposal was offered by Appalachian State University.

Arranged chronologically.

Box 1.

RG 9: RESOURCE MANAGEMENT AND VISITOR SERVICES

SERIES 2 ASSOCIATIONS. 1980-1987. 2 IN.

Correspondence with the Appalachian Consortium and the Blue Ridge Parkway Association regarding programs and projects planned in cooperation with the Blue Ridge Parkway.

Arranged chronologically.

Box 1.

SERIES 3 COMMITTEES. 1980, 1982-1984, 1986. 2 IN.

Primarily correspondence and committee minutes from internal Blue Ridge Parkway committees. Committees represented include the Management Improvement Committee, the Parkway Safety Committee, and the Resource Protection Advisory Committee.

Arranged chronologically.

Box 1.

SERIES 4 WILDLIFE MANAGEMENT REVIEW COMMITTEE. 1984. 1 IN.

Minutes of committee meetings. The committee was sponsored by the Great Smoky Mountains National Park to provide a forum for the communication of ideas on wildlife issues. The first meeting was held on February 29, 1984. See also RG 5 Series 61.

Arranged chronologically.

Box 1.

SERIES 5 COMMUNICATIONS COORDINATING COMMITTEE. 1983-1987.
6 IN.

Correspondence and minutes of committee meetings. The committee was established to deal with such matters as the use of radio equipment by Parkway personnel and others, the purchase of communication equipment for the Parkway, and the use of radio frequencies along the Parkway.

Arranged chronologically.

Box 2.

SERIES 6 COMMENDATIONS. 1982-1987. 1.5 LF.

Letters, primarily from private individuals to the Superintendent, commenting favorably on the services or assistance offered by Parkway personnel. Some commendations are from the Superintendent to Park personnel.

Arranged chronologically.

Box 3-5.

SERIES 7 COMPLAINTS. 1981, 1982-1988. 6 IN.

Letters, primarily from private individuals to the Superintendent, commenting unfavorably on the services or assis-

RG 9: RESOURCE MANAGEMENT AND VISITOR SERVICES

tance offered by Parkway personnel or complaints concerning Parkway operations. Complaints are accompanied by a copy of the Superintendent's reply.

Arranged chronologically.
Box 6.

SERIES 8 COMPLAINTS CONCERNING CONCESSIONS. 1980-1984, 1988.
6 IN.

Letters, primarily from private individuals to the Superintendent, commenting unfavorably on the services or assistance offered by Parkway concessions. Complaints are accompanied by a copy of the Superintendent's reply to the sender and to the manager of the concession operation. See also RG 3 Series 2.

Arranged chronologically.
Box 7.

SERIES 9 PUBLIC RELATIONS. 1979-1988. 1 LF.

Correspondence with government officials, congressional representatives, and private individuals concerning commendations or complaints for Parkway operations, awards, events, and visits.

Arranged chronologically.
Box 8-9.

SERIES 10 MEMORANDUMS OF AGREEMENT WITH FEDERAL, STATE, AND LOCAL AGENCIES. 1977, 1980-1986. 1 LF.

Correspondence with the North Carolina Wildlife Resource Commission, the North Carolina Forest Service, the Appalachian Trail Club, the Federal Aviation Administration, George Washington National Forest, and various local chambers of commerce. Major subjects include fire control, hunting, the Appalachian Trail, and low flying aircraft in National Park areas.

Arranged chronologically.
Box 10-11.

SERIES 11 ACCIDENTS, INJURIES, AND DEATHS. 1979-1987. 6 IN.

Correspondence and reports from accident Board of Inquiry meetings. Correspondence concern private vehicle and government vehicle accidents, Parkway safety, and government vehicle accident reporting procedures. Board of Inquiry reports describe vehicle accidents involving government vehicles or fatalities and recommend actions to avoid recurring accidents of the same type.

Arranged chronologically.
Box 12.

RG 9: RESOURCE MANAGEMENT AND VISITOR SERVICES

SERIES 12 INTERPRETIVE ACTIVITIES. 1974-1978, 1980-1985.
1.5 LF.

Correspondence concerning improvements to visitor centers, accessibility of Parkway facilities to the handicapped, and Parkway exhibits and displays. See also Record Group 11.

Arranged chronologically.

Box 13-15.

SERIES 13 INTERPRETIVE PLANNING. 1977-1988. 6 IN.

Primarily correspondence regarding the planning of interpretive activities along the Parkway. Much of the correspondence concerns the Felicidades Ecocenter. Also included are interpretive prospectuses for the Museum of North Carolina Minerals, Humpback Rocks Visitor Center, and Craggy Gardens Visitor Center. See also Record Group 11.

Arranged chronologically.

Box 16.

SERIES 14 PRESS RELEASES. 1972-1988. 2 LF.

Copies of press releases issued by the Blue Ridge Parkway, the Southeast Regional Office and the Washington Office of the National Park Service, the Great Smoky Mountains National Park, the Shenandoah National Park, and the U.S. Forest Service. Press releases concern public hearings and public comments, visitor statistics, events, and availability of services. See also RG 1 Series 26.

Arranged chronologically by year.

Box 17-20.

SERIES 15 SPECIAL ARTICLES REGARDING SERVICE OR AREAS. 1940, 1959-1961, 1979, 1983, 1985, 1987. 6 IN.

Correspondence regarding newspaper articles, magazine articles, and books on the Blue Ridge Parkway. Copies of articles are included. Some of the articles describe the history of Mabry Mill, Puckett Cabin, Brinegar Cabin, and Caudill Cabin. Includes a copy of the "Blue Ridge Odyssey" newspaper article. Several articles by Parkway personnel Sam P. Weems, W. Ray Scott, Stanley W. Abbott, Donald H. Robinson, and Edward H. Abbuehl are included. Also included is biographic information on Sam P. Weems.

Arranged chronologically.

Box 21.

RG 9: RESOURCE MANAGEMENT AND VISITOR SERVICES

SERIES 16 JURISDICTION. 1936-1988. 2.5 LF.

Correspondence with state law enforcement officials in North Carolina and Virginia regarding the establishment of concurrent federal/state legal jurisdiction on the Blue Ridge Parkway. Memorandums of agreement on concurrent jurisdiction are included. Early records concern the coordination of state and federal jurisdiction on the Parkway and the establishment of jurisdictional boundaries.

Arranged chronologically.
Box 22-26.

SERIES 17 LAW ENFORCEMENT. 1946, 1948-1987. 4.5 LF.

Correspondence, reports, and newspaper clippings. Major subjects include identifying crime problems along the Parkway and measures to solve the problems, law enforcement policies and procedures, law enforcement training of Parkway personnel, the identification of criminals and criminal activity, and illegal drugs on the Parkway.

Arranged chronologically.
Box 27-35.

SERIES 18 BOWMAN CASE FILES. 1939-1986. 8 LF.

On December 27, 1983, Steven and Michael Bowman were fatally injured and their father, Loyd P. Bowman, seriously injured as a result of a single car accident on the Blue Ridge Parkway at Milepost 319.6. A claim of liability against the United States of America was filed on behalf of the estates of the three individuals. The records in this series are primarily documents compiled by the Blue Ridge Parkway in response to informational requests made by the plaintiffs. The majority of documents were compiled to answer specific questions raised in the appendix of the original claim (Appendix C-1, Appendix D-1 through D-12 and Appendix I, Interrogatories I-1 through I-13). The miscellaneous files contain copies of plaintiff's and defendant's legal documents and other correspondence related to the case.

The records are arranged in the following order: Appendix C-1, 1983 Snow Removal Statement and Policy (1983); Appendix D-1, All Written Design Standards for the Blue Ridge Parkway Relative to Guiderail, Guardrail, or Barrier Placement as of Dec. 27, 1983 (Guardrail Schedules 1939-1960, Guardrail Programming and Construction 1938-1957); Appendix D-2, Parkway Standards in Effect for the Blue Ridge Parkway as of Dec. 27, 1983 (1979, 1983); Appendix D-3, All Traffic Volume Counts Taken on the Blue Ridge Parkway as the four closest locations to Milepost 319 North and South During the last twenty years (1981); Appendix D-4, All Traffic Accident Reports and Records Maintained by the National Park Service on Form 10-413 or its Predecessor from Jan. 1, 1960

RG 9: RESOURCE MANAGEMENT AND VISITOR SERVICES

- Dec. 27, 1983 on the Blue Ridge Parkway from Milepost 318 to Milepost 321 (1971-1982); Appendix D-5, All Traffic Accident Reports and Records Maintained by the National Park Service on Form 10-413 or its Predecessor for All Road Vehicular Accidents Occurring at Vistas Cleared or Created by the National Park Service Involving Death or Bodily Injury from Milepost 250 to Milepost 400 of the Blue Ridge Parkway from Jan. 1, 1960 through Dec. 27, 1983 (Accident Reports (1960-1984), Accident Reports - Gillespie Gap (1970-1984), Fatalities (1976-1983)); Appendix D-6, All Documents Indicating the Specific Location of Guiderails, Guardrails, or Similar Barriers Erected by or Under the Supervision of the National Park Service on the Blue Ridge Parkway from Milepost 200 to Milepost 400 as well as all Documents Indicating the Warrants Used or Relied Upon by the National Park Service in Erecting Such Protective Barriers (1980, 1984-1985); Appendix D-7, All Documents Consisting of Form 10-343 or its Equivalent on File with the National Park Service from Jan. 1, 1960 to Jan. 1, 1984 for that Section of the Parkway Between Milepost 315 and 325 (1981-1983); Appendix D-8, All Documents Specifically Including any Maps or Diagrams Maintained by the National Park Service which Indicate Vehicular Accident Locations, Patterns, or Trends on the Blue Ridge Parkway Including that Section of the Parkway between Mileposts 250 and 400 (1981-1984); Appendix D-9, All Documents Relating to Policies or Procedures Enacted or Relied Upon by the National Park Service from January 1, 1960 Through the Present Date Relating to Closing or Barricading Sections of the Blue Ridge Parkway During Ice, Snow, Winter, or Inclement Weather (1964-1985); Appendix D-10, All Documents Relating to Policies or Procedures Enacted or Relied Upon by the National Park Service Relative to the Erection of Gates or Other Barricades at Specific Locations of the Blue Ridge Parkway from January 1, 1960, to the Present Date (1964, 1966-1968, 1983-1985); Appendix D-11, All Documents Relating to Policies or Procedures Enacted by the National Park Service from January 1, 1960, through January 1, 1984, Relative to the Erection of Warning Signs or Other Notices to Motorists Traveling the Blue Ridge Parkway from January 1, 1960, to the Present Date (1967, 1978-1979, 1981-1983); Appendix D-12, All Photographs Taken By Any Officer, Agent, or Employee of the Defendant Pertaining to the Bowman Fatalities and Injuries Which Occurred at Milepost 319.6 on the Blue Ridge Parkway Within the County of McDowell, State of North Carolina, on the Afternoon of December 27, 1983 (1983); Appendix I-1 through I-13 (1983); Accident Report File (1983-1985); Tort Claim File (1985-1986); Engineer's Report (1984-1986); Miscellaneous (1981-1986).

Box 36-51.

RG 9: RESOURCE MANAGEMENT AND VISITOR SERVICES

SERIES 19 TORT CLAIMS. 1979-1987. 2.5 LF.

Documents compiled for tort claims filed against the Parkway for vehicle accidents and government employee claims. Files typically contain copies of accident reports, case incident records, Regional Solicitor's opinions, and some correspondence.

Arranged chronologically.
Box 52-56.

SERIES 20 TRAFFIC ACCIDENT REPORTS. 1979-1987. 15.5 LF.

Completed Form 10-413. The forms provide information on the time and place of traffic accidents and list the individuals involved. In addition, the forms provide information on the type of vehicles involved and describe the circumstances in which the accident occurred. Forms were completed by the investigating Park Ranger. Some reports have drawings or photographs attached. See also RG 10 Series 1.

Arranged chronologically.
Box 57-87.

SERIES 21 GOVERNMENT VEHICLE ACCIDENT REPORTS. 1979-1987.
3.5 LF.

Completed Form 10-413 for government vehicle accidents. The forms provide information on the time and place of traffic accident and list the individuals involved. In addition, the forms provide information on the types of vehicles involved and describe the circumstances in which the accident occurred. Forms were completed by the investigating Park Ranger. Some reports have drawings or photographs attached.

Arranged chronologically.
Box 88-94.

SERIES 22 FATALITIES. 1979-1987. 4 LF.

Documents compiled in all cases of fatalities on the Parkway, including traffic accidents, suicides, natural causes, and drownings. A typical file contains a traffic accident report, statements from witnesses, medical examiner's report, case incident record, and minutes of the Board of Inquiry. Photographs and newspaper clippings accompany some reports.

Arranged chronologically.
Box 95-102.

RG 9: RESOURCE MANAGEMENT AND VISITOR SERVICES

SERIES 23 ANNUAL LAW ENFORCEMENT REPORTS. 1964-1976, 1981-1988.
6 IN.

Annual report to the Southeast Regional Office. Reports list law enforcement program costs, personnel, archeological enforcement actions, itemized traffic law enforcement violations, and other offenses.

Arranged chronologically.
Box 103.

RECORD GROUP 10

RECORDS OF THE UNIT AND DISTRICT RANGERS (CAT. NO. BLRI-8358)

Ranger activities along the Parkway are coordinated through two unit offices. The North Carolina Unit Office is located in Oteen, North Carolina. The Virginia Unit Office is located in Roanoke, Virginia. An Assistant Chief Ranger supervises the operations of each unit office and reports directly to the Chief Ranger. Within each state are several district offices. As of December 1988, district offices were located in the Bluffs, Cone-Price, Gillespie Gap, Swannanoa, and Balsam Gap in North Carolina. District offices were located in James River, Peaks of Otter, Roanoke Valley, and Rocky Knob in Virginia. Rangers in the district offices are responsible for Parkway safety, law enforcement, visitor assistance, and day-to-day supervision of Parkway activities.

The records in this group document the activities of rangers in North Carolina. The records include accident reports, monthly district reports, and correspondence files. The records comprise 11 linear feet and date 1951-1982. Related records can be found in RG 9.

RECORD SERIES

SERIES 1 ACCIDENTS, INJURIES, DEATHS. 1951-1972. 5 LF.

Primarily investigation reports of motor vehicle accidents. Also includes case incident reports, supervisor's reports of accident, reports of accidents other than motor vehicles, operator's reports of motor vehicle accidents, witness reports, and reports of personal injuries. Occasional letters, narrative reports, drawings, and photographs accompany reports. See also RG 9 Series 20.

Arranged chronologically.
Box 1-10.

SERIES 2 MONTHLY DISTRICT REPORTS. 1963-1971, 1975-1982. 4 LF.

Monthly reports from District Rangers in North Carolina to the Assistant Chief Ranger. Reports include information on weather, special visitors, special activities, visitor statistics, law enforcement activities, motor vehicle accidents, personnel activities, research and observations, fire control, sanitation, safety and health activities, wildlife and fish studies, insects and tree diseases, concessions, complaints, resource planning, and public relations. Reports are available

RG 10: UNIT AND DISTRICT RANGERS

from the Asheville District (1963-1976), Bluffs District (1975-1976), Doughton Park (1976-1978), and South District (1977-1982).

Arranged chronologically.

Box 11-18.

SERIES 3 CORRESPONDENCE. 1973-1976. 2 LF.

Letters received from private individuals, the Superintendent, and District Rangers in North Carolina as well as copies of letter sent by the Assistant Chief Ranger. Correspondence concern management and use of the Parkway in North Carolina, personnel matters, hang gliding on the Parkway, concessions, campgrounds, and a variety of other topics. Minutes of Superintendent's staff meetings are also included.

Arranged chronologically.

Box 11-22.

RECORD GROUP 11

RECORDS OF THE INTERPRETIVE SPECIALIST (CAT. NO. BLRI-8359)

The Interpretive Specialist serves in the Division of Resource Management and Visitor Services under the supervision of the Chief Ranger. The primary responsibility of the Interpretive Specialist is to plan and direct the interpretive program of the Blue Ridge Parkway. As such, the Interpretive Specialist performs the following duties: Directs special interpretive research projects undertaken by NPS and non-NPS personnel; Assists the Assistant Chief Rangers and the Unit Interpretive Specialists in developing interpretive activities; Directs the operation of the Parkway Library collection; Selects interpretive media and assists in exhibit design; Develops interpretive material for use on the Parkway; Coordinates the Parkway's Volunteer-in-Parks program; Serves as Parkway liaison to the Eastern National Park and Monument Association.

The position of Interpretive Specialist evolved from the duties of the Park Naturalist. William G. Lord was appointed as the first Park Naturalist in May 1951. By 1970, the position had grown to a division known as Interpretation and Visitor Services. By 1983, the duties were incorporated into the Division of Resource Management and Visitor Services.

The records in this group consist of interpretive materials which provide valuable, and often unique, sources of information on the Blue Ridge Parkway and the region through which it passes. The record group contains three series: Interpretive Files; Motion Picture Film of the Blue Ridge Parkway; and Photographs. The records comprise 6.5 linear feet and date 1932-1981. Related records can be found in RG 9 Series 12 and Series 13.

RECORD SERIES

SERIES 1 INTERPRETIVE FILES. 1939-1980. 1 LF.

Pamphlets, essays, reports, and copies of magazine and newspaper articles relating to people, wildlife, lifestyles, and places along the Blue Ridge Parkway. Major subjects include the archeology of North Carolina, folklife, Linville Falls, Ed Mabry, Mountain Indians, Peaks of Otter, Puckett Cabin, and snakes among various other topics. Also includes a pamphlet on "Rocks and Minerals of the Blue Ridge," (Cat. No. BLRI-0000) which describes geologic and physical features of the area.

Arranged alphabetically by subject.

Box 1-2.

RG 11: INTERPRETIVE SPECIALIST

SERIES 2 MOTION PICTURE FILM OF THE BLUE RIDGE PARKWAY. 1976.
13 REELS. 3 LF.

Negative 35mm motion picture film taken by the Federal Highway Administration in 1976. The film documents every mile of the Parkway route from milepost 0.0 to milepost 455.0. Reel #2 is missing.

Arranged by reel number.
Box 3-6.

SERIES 3 PHOTOGRAPHS. 1932-1981. 2.5 LF.

Black and white as well as color photographs of various locations on and off the Blue Ridge Parkway. Some photographs are of people, including residents along the Parkway and Parkway employees. Many of the photographs are from the Still Photography and Picture Library in the Washington Office of the National Park Service. Photographs provided research material for interpretive activities.

Arranged alphabetically by subject in the following order: William Barnhill Photos; Biltmore House; Buck Springs; Buildings; Ceremonies; Moses H. Cone; Crafts; Historic Construction Photos; Landscaping; Granville Liles; Linville Falls; Linville Viaduct; Living History; Logging Railroad, James River District; Mountain Clothing and Lifestyles; National Park Service Centennial Celebration; Overmountain Victory Trail 200th Anniversary; Parkway Employees; Plants and Wildlife; Young Adult Conservation Corps.; Miscellaneous.

Box 7-11.

SERIES 4 - ORAL HISTORY INTERVIEWS. (ACC. 440, CATALOG # BLRI - 11454)

RECORD GROUP 12

RECORDS OF THE DIVISION OF MAINTENANCE AND ENGINEERING

(CAT. NO. BLRI-8360), 11432

~~CAT. NO. BLRI-11435~~

The Division of Maintenance and Engineering is supervised by the Chief of Maintenance and Engineering. The division is one of four administrative divisions of the Blue Ridge Parkway. The division is responsible for all engineering and construction projects along the Parkway. Included in the division is the Engineering and Technical Support Group which develops specifications for road repairs, well drilling, centerline striping, water and sewer systems, and related operations. All maintenance activities are coordinated through this division. The Chief of Maintenance and Engineering supervises an Assistant Chief of Maintenance in Virginia and an Assistant Chief of Maintenance in North Carolina. Supervision of the nine district maintenance foremen is directed through the Assistant Chief of Maintenance in each state.

The Division of Maintenance and Engineering develops plans, budgets, specifications, and schedules for accomplishing the construction and maintenance plans of the Parkway. To achieve this goal, the division has the following primary duties: Develops proposals for construction, renovation, or repair of roads and facilities; Conducts utility rate studies; Collects and analyzes engineering data; Directs operations of all electrical equipment on the Parkway.

The division was originally established as the Engineering Division in 1939 when O.A. Cozzani was appointed Associate Engineer. By 1941, the name was Maintenance and Construction Division. By 1987, the division was named Maintenance and Engineering.

The records contained in this record group document the construction of the Blue Ridge Parkway from its earliest beginnings. Construction of buildings and other facilities are also documented. Easement sketches provide valuable information on right-of-way easements acquired by the Parkway. Aerial photographs provide reconnaissance information on physical and geological features along the Parkway's route. The records comprise 36 linear feet and are dated 1936-1988.

RG 12: DIVISION OF MAINTENANCE AND ENGINEERING

RECORD SERIES

SERIES 1 CONSTRUCTION PROJECTS. 1936-1986. 8.5 LF.

Proposals and contract documents prepared by the National Park Service and the Bureau of Public Roads for road construction, road grading, tunnel construction, bridge construction, spur and access road construction, and road paving. Documents consist of booklets containing project specifications, special provisions, bids, contracts, plans and drawings, and performance bonds. Many bid forms were completed by contractors. Some final construction reports are included as well.

Arranged by project number.

Box 1-17.

~~Box 1-17~~

SERIES 2 FINAL CONSTRUCTION REPORTS. ¹⁹⁵³ 1954, 1961-1988. 3.5 LF.

Project completion reports prepared by the Bureau of Public Roads for road construction, road grading, tunnel construction, bridge construction, spur and access road construction, and road paving. Reports contain photographs, drawings, maps, expenditure accounts, and inspection reports. Narrative descriptions of projects accompany some reports. See also Series 10.

Arranged by project number.

Box 18-24.

SERIES 3 MONTHLY PROGRESS REPORTS. 1954-1979. 4.5 LF.

Reports to the Southeast Regional Office regarding progress on construction projects along the Parkway. For each project in progress reports list fiscal year project funded, project number, project title, construction dates, and percent complete. Contractor's name and amount of expenditures on project are also given.

Arranged chronologically.

Box 25-33.

SERIES 4 EASEMENT SKETCHES. 1937-1956. 4.5 LF.

Original sketches and copies of sketches indicating Parkway right-of-way easements. Sketches were originally prepared by the Roanoke Office of the Blue Ridge Parkway. A record of sketch approvals and revisions accompanies sketches for each section of the Parkway. A Parkway Easement Cover Sheet also accompanies each series of sketches. Sketches were approved by the Resident Landscape Architect.

Arranged by Parkway section number.

Box 34-42.

RG 12: DIVISION OF MAINTENANCE AND ENGINEERING

SERIES 5 PUBLIC ROADS ADMINISTRATION REPORTS. 1940, 1942-1949.
3.5 LF.

Monthly reports by the Public Roads Administration (PRA), part of the Federal Works Agency. Reports document progress made on construction of the Blue Ridge Parkway. Reports were compiled by the Roanoke Field Office of the PRA and were submitted by E.G. Middleton, Principal Highway Engineer. A brief narrative description of monthly activities accompanies each report. Statistical abstracts of each project outline expenditures, budgets, and completion percentages. Location survey and plans reports by project are provided. Maps of construction progress and construction progress charts are included. Photographs of construction activities are also included.

Arranged chronologically.
Box 43-49.

SERIES 6 BUREAU OF PUBLIC ROADS REPORTS. 1949-1971. 5 LF.

1936
Monthly reports by the Bureau of Public Roads (BPR), successor to the Public Roads Administration. Reports document progress made on construction of the Blue Ridge Parkway. Reports were compiled by the Roanoke Field Office of the BPR. A brief narrative description of monthly activities accompanies each report. Statistical abstracts of each project outline expenditures, budgets, and completion percentages. Location survey and plans reports by project are provided. Maps of construction progress and construction progress charts are included. Photographs of construction activities are also included.

Arranged chronologically.
Box 50-59.

SERIES 7 BUREAU OF PUBLIC ROADS REPORTS - GATLINBURG DIVISION.
1966-1965, 1963-1957. 1 LF.

Monthly reports by the Gatlinburg Office of the Bureau of Public Roads (BPR), successor to the Public Roads Administration. Reports document progress made on construction of the Blue Ridge Parkway, Great Smoky Mountains National Park, Foothills Parkway, and Mammoth Cave National Park. A brief narrative description of monthly activities accompanies each report. Statistical abstracts of each project outline expenditures, budgets, and completion percentages. Status of surveys and plans reports by project are provided. Occasional initial, final, and intermediate construction inspection reports are included.

Arranged chronologically.
Box 60-61.

RG 12: DIVISION OF MAINTENANCE AND ENGINEERING

SERIES 8 FEDERAL HIGHWAY ADMINISTRATION (FHWA) REPORTS.
1971-1979. 6 IN.

Status of surveys and plans reports which list project name and project type, program budget, survey and design costs, and construction costs. Reports were compiled monthly.

Arranged chronologically.
Box 62.

SERIES 9 AERIAL PHOTOGRAPHS. 1966, 1969-1970. 2 LF.

Aerial photographs of route of the Blue Ridge Parkway and surrounding physical and geological features. Some photographs are of the proposed route of the Blue Ridge Parkway Extension. Some photographs have markings added. Many of the photographs were made and distributed by the North Carolina State Highway Commission. Photographs have dimensions of 9 In. x 9 In.

Photographs are arranged in the following order: Section 1J; Sections 1P-1W; Section 2W; Section 3B; Section 4C; Section 4M; Section 4P; Section 4Q; Biltmore Estate; Adjacent Lands Section 1Q; Adjacent Lands Section 1S.
Box 63-66.

SERIES 10 OLD FINAL CONSTRUCTION REPORTS. 1948-1953. 1 LF.

Project completion reports prepared by the Public Roads Administration of the Federal Works Agency and the Bureau of Public Roads, Region 15. Reports document road construction, road grading, tunnel construction, bridge construction, spur and access road construction, and road paving. Reports contain photographs, drawings, maps, expenditure accounts, and inspection reports. Narrative reports of project accompany some reports. See also Series 2.

Arranged by project number.
Box 67-68.

3/24/81 by B. B. D. State Construction Report 1948-1953

RG 12: DIVISION OF MAINTENANCE AND ENGINEERING

SERIES 11 OLD BUILDING FILES. 1950-1960. 2 LF.

Folders with Form 10-768 imprinted on side used for appraisal of structures along the Parkway. Occasional completed forms are included in the folder. Information on form includes date of appraisal, location of building, building name and number, used by, year build, drawing number, original cost and present value, and information on construction type, utilities, and condition of the building. A floor plan sketch is provided. Photographs of the building usually accompany folders. Name of appraiser is usually given.

Arranged by district in the following order: Balsam Gap, Gillespie Gap, Bluffs, Rocky Knob, Roanoke Valley, and Montebello.

Box 69-72.

MANUSCRIPT COLLECTIONS

R. GETTY BROWNING PAPERS (CAT. NO. BLRI-8361)

R. Getty Browning was born on April 7, 1884 in Oakland, Maryland. He served as Location and Claims Engineer for the North Carolina Highway Commission from 1925 to 1964. During that time, he played an active role in planning the route for the Blue Ridge Parkway through North Carolina. Browning served as spokesman for the North Carolina delegation during public field hearings for the proposed Blue Ridge Parkway in 1934. He also negotiated with officials of the Cherokee Indian Agency for Parkway right-of-way agreements through the Cherokee Indian Reservation. Browning was often referred to as "the architect of the Blue Ridge Parkway."

Browning died on January 30, 1966 in Blowing Rock, North Carolina. Browning Knob, near Waterrock Knob, North Carolina was named in his honor in June 1970.

The records in this collection are photocopies of documents located at the North Carolina Department of Transportation. Most of the documents were R. Getty Browning's official papers although some right-of-way agreements post-date his death. The documents record Browning's activities in planning the Parkway route through North Carolina and provide information on costs of right-of-way agreements. Much of the correspondence in this collection relates to Browning's efforts to acquire right-of-way agreements. The records comprise two linear feet and are dated 1933-1962 with the exception of Series 7 which dates 1962-1982.

RECORD SERIES

SERIES 1 CORRESPONDENCE. 1934-1935, 1946, 1954, 1956-1959.
3 IN.

Primarily memorandums to Division Engineers from W.F. Babcock, Director of the State Highway Commission. Most of the memorandums concern policies, procedures, and organization of the State Highway Commission. Some correspondence regarding the cost of the Blue Ridge Parkway Project are included. Also included are an organizational chart of the State Highway Commission and a schedule of interstate highway projects for 1957-1958.

Arranged chronologically.

Box 1.

R. GETTY BROWNING PAPERS

SERIES 2 HARRY F. BYRD TELEGRAM. 1933. 0.5 IN.

Copy of a telegram from Harry F. Byrd to J.W. Bailey, U.S. Senator from North Carolina. The telegram concerns a conversation Byrd had with "The President" regarding the construction of a scenic highway connecting the Shenandoah National Park and the Great Smoky Mountains National Park. The telegram is dated October 7, 1933. The telegram is accompanied by a letter, J.W. Bailey to E.B. Jeffress, Chairman of the State Highway Commission, dated October 9, 1933.

Arranged chronologically.

Box 1.

SERIES 3 DEPARTMENTAL MEMORANDA. 1957-1959. 1.5 IN.

Copies of memoranda to and from R. Getty Browning concerning personnel and office operations. Many of the memoranda are from the Personnel Officer, the Assistant Chief Engineer, and the Purchasing Agent.

Arranged chronologically.

Box 1.

SERIES 4 PERSONNEL RECORDS. 1956-1959. 1 IN.

Personnel action forms, applications for employment, and reclassification forms for R. Getty Browning and his staff. Records contain important biographical information.

Arranged chronologically.

Box 1.

SERIES 5 BLUE RIDGE PARKWAY TOLLS. 1933-1959. 1 LF.

Copies of correspondence, statements, and newspaper clippings regarding placement of tolls on the Blue Ridge Parkway. Some of the correspondence are with State Highway Commission officials and congressmen. Included are statements by R. Getty Browning and E.B. Jeffress.

Arranged chronologically.

Box 2-3.

SERIES 6 BLUE RIDGE PARKWAY RIGHT-OF-WAY COSTS. 1938-1944, 1958-1962. 1 IN.

Itemized costs and budget statements for State Highway Commission expenditures on right-of-way agreements and contracts.

Arranged chronologically.

Box 4.

R. GETTY BROWNING PAPERS

SERIES 7 RIGHT-OF-WAY AGREEMENTS. 1962-1982. 5 IN.

Copies of agreements and correspondence regarding right-of-way agreements for the Blue Ridge Parkway. Many of the correspondence concern progress in obtaining right-of-way agreements.

Arranged chronologically.

Box 4.

MOSES H. CONE PAPERS
(CAT. NO. BLRI-7988)

Moses H. Cone, businessman and conservationist, was born in Jonesboro, Tennessee in 1857. With his brother Ceasar, Moses founded the Cone Export and Commission Company and the Proximity Manufacturing Company. The latter company produced denim, corduroy, flannel, and other fabrics. Moses Cone acquired over 3,500 acres of land near Blowing Rock, North Carolina, including Flat Top Mountain and Rich Mountain. There he built an estate which included a large manor house, dairy, farm, carbide plant, blacksmith shop, laundry, ice house, carriage trails, school, and apple orchards. The estate employed approximately 100 workers, many of whom lived on the estate, including Arthur Moody, Superintendent of Labor, S.T. Isenhour, Carpenter and Blacksmith, and E.G. Underdown, Apple Orchard Superintendent. Sandy Flats School was constructed on the estate to serve the educational needs of the tenant families. Moses Cone, a strong supporter of education, served on the executive board of Watauga Academy and the Watauga County Board of Education.

Moses Cone died in 1908 at the age of 51. His wife, Bertha Cone, lived until 1947. By the terms of Bertha Cone's will, the Cone estate was deeded to the Moses H. Cone Memorial Hospital in Greensboro, NC with the provision that at least \$10,000 annually would be spent on the estate to maintain it as a public park. In 1949, the land was deeded to the National Park Service to become part of the Blue Ridge Parkway.

The records in this collection represent business records from the operation of the farm and orchard as well as some personal business records of Bertha Cone. They document the daily activities of managing an apple orchard and farm in turn of the century Appalachia. The records are dated 1898-1947 and total 23.5 linear feet. Records related to Moses H. Cone and the Cone Estate can be found in RG 5 Series 40 and RG 7 Series 15.

RECORD SERIES

SERIES 1 LETTERS TO E.G. UNDERDOWN. 1913-1914. 3 IN.

Handwritten letters from Mrs. Moses H. Cone concerning management of the Flat Top Orchard, including topics such as the price of apples, shipments, and general management activities. Also includes one letter from E.G. Underdown to Professor B.B. Dougherty of Boone, NC regarding the acquisition of an assistant teacher for the local school.

Arranged chronologically.

Box 1.

MOSES H. CONE PAPERS

SERIES 2 LETTERS RECEIVED. 1909-1937. 3 IN.

Letters and telegrams received by Mrs. Moses H. Cone and E.G. Underdown regarding apple prices, orders, shipments, and storage. Occasional product information and promotional literature from manufacturers. Some correspondence relate to the purchase of supplies and equipment for the farm and orchard. A few letters are from the North Carolina Department of Agriculture and from the U.S. Department of Agriculture.

Arranged alphabetically by name of sender and thereunder chronologically.

Box 1.

SERIES 3 BUSINESS RECEIPTS. 1905-1922, 1932, 1935-1937.
2.5 LF.

Receipts for purchases of supplies and equipment for the orchard and farm. Occasional receipts for apples sold. Also includes deposit receipts from the Bank of Blowing Rock.

Arranged alphabetically.

Boxes 2-6.

SERIES 4 BUSINESS INVOICES. 1898-1904. 2 VOLS. 2 LF.

Invoices and business receipts relating to the purchase of supplies and equipment for the orchard and farm. An index to entries is given in the front of each volume. Volume 1 is dated 1898-1890, 1900-1901. Volume 2 is dated 1899-1904.

Each volume is arranged alphabetically by merchant.

Boxes 7-8.

SERIES 5 WOOD LEDGERS. 1925-1941. 2 VOLS. 6 IN.

Accounts of wood sold by the estate. Daily account of cords of wood sold, to whom sold, price, and notes on any payments on accounts. An index to entries is given in the front of each volume.

Arranged by name of customer.

Box 9.

SERIES 6 LEDGER OF GREEN PARK ORCHARD. 1937. 1 VOL. 6 IN.

Daily accounts of apples sold, including the number of bushels, price per bushel, and total amount of sale. Only two pages of the volume contain entries. Several pages have been torn from the volume.

Arranged chronologically.

Box 9.

MOSES H. CONE PAPERS

SERIES 7 DAILY DIARY. 1899-1901. 1 VOL. 6 IN.
(CAT. NO. BLRI-8049)

Descriptions of daily activities on the farm and orchard. Describes work performed and includes descriptions of the weather and its effect on crops. Some descriptions of sales and purchases are given. Listings of orchard trees and nursery lists are also included in the volume.

Arranged chronologically.
Box 9.

SERIES 8 JOURNAL. N.D. 1 VOL. 9 IN.

Journal of miscellaneous expenditures including supplies, trees, and lumber. Only three pages of the journal contain entries. Several pages are missing from the book.

Arranged chronologically.
Box 10.

SERIES 9 TIME BOOKS. 1910-1915. 3 VOLS. 9 IN.

Biweekly record of time worked by each employee on the estate. Includes name of employee, number of hours worked each day, total number of hours worked, wages per day, and total amount paid. See also Series 10.

Arranged chronologically.
Box 10.

SERIES 10 PAYROLL LEDGER. 1901-1947. 1 VOL. 2 LF.

E.G. Underdown's biweekly record of time worked by each employee on the estate. Includes name of employee, number of hours worked each day, total number of hours worked, rate of pay, and total amount paid. Some entries duplicate Time Book entries. See also Series 9.

Arranged chronologically.
Box 11.

SERIES 11 MONTHLY ACCOUNT JOURNAL. 1899-1900. 1 VOL. 9 IN.

Monthly statements of accounts for orchard and farm. Lists credits and debits. Inventories of farm items are included.

Arranged chronologically.
Box 12.

MOSES H. CONE PAPERS

SERIES 12 BIWEEKLY ACCOUNT JOURNAL OF RECEIPTS. 1904-1908.
1 VOL. 9 IN.

E.G. Underdown's biweekly statement of orchard sales. Includes name of customer, amount purchased, price, and total amount received.

Arranged chronologically.
Box 12.

SERIES 13 CHECK BOOK AND CHECK STUBS - FLAT TOP MANOR ORCHARDS.
1940-1942, 1944-1945, 1947. 13 VOLS. 1.5 LF.

Blank checks and completed check stubs. Stubs record the check number, date, to whom paid, and amount of check. Checks were from the North Western Bank.

Arranged chronologically.
Box 13.

SERIES 14 CHECK BOOK AND CHECK STUBS - MRS. MOSES H. CONE. 1909.
2 VOL. 1.5 LF.

Blank checks and completed check stubs. Stubs record the check number, date, to whom paid, and amount of check. Checks were from the Bank of Blowing Rock.

Arranged chronologically.
Box 14.

SERIES 15 BANK DRAFT REGISTER. 1908-1909, 1913-1914. 2 VOLS.
1.5 LF.

Mrs. Moses H. Cone's register of bank drafts drawn on the Bank of Blowing Rock. Lists date, to whom paid, check number, and amount of check.

Arranged chronologically.
Box 15.

SERIES 16 ALBUM OF DECORATIVE CARDS AND SEALS. CA. 1947. 1 VOL.
1.5 LF. (CAT. NO. BLRI-8050)

Volume contains decorative cards, seals, and clippings pasted to the pages. Some cards advertise commercial products.

No arrangement.
Box 16.

MOSES H. CONE PAPERS

SERIES 17 ORCHARD MAPS AND INVENTORY. 1900. 68 PAGES. 1.5 LF.
(CAT. NO. BLRI-8051)

Hand drawn maps detailing the layout of Flat Top Orchard including an inventory of tree types in each field.

Arranged by field number.

Box 17.

SERIES 18 MISCELLANEOUS PUBLICATIONS. 1896-1937. 1.5 LF.

Magazines, journals, brochures, and booklets primarily concerning farming, agriculture, and fruit growing. Includes two bound volumes of the Rural New Yorker (1898, 1902) and one bound volume of the Western Fruit Grower (1903).

Not arranged.

Boxes 18-19.

SERIES 19 CANCELLED CHECKS FROM THE HOSPITAL FUND OF MOSES H.
CONE MEMORIAL HOSPITAL. 1947. 1 IN.

Counter checks drawn on the Northwestern Bank, Blowing Rock, NC. Also includes statement of account for July 1947. All checks signed by A.C. Moody.

Arranged chronologically.

Box 20.

SERIES 20 CONTRACTS FOR ELECTRIC SERVICE. 1929. 2 SHEETS.

Two contracts with Blowing Rock Light and Power Co. for electric service to be provided to the Cone's apple house, foreman's house, and barn.

Arranged chronologically.

Box 20.

SERIES 21 WATER SYSTEM DRAWING. 1904. 1 SHEET.
(CAT. NO. BLRI-8052)

Drawing of water system provided by Rife Engine Co., New York. The drawing details how water could be pumped from the lake to an elevation of 225 feet.

Box 20.

SERIES 22 DRAWING OF PEACH ORCHARD AT EDMAN GREENS. 1898.
1 SHEET. (CAT. NO. BLRI-8053)

Drawing and inventory indicating location and type of trees.
"Set in Spring 1898."

Box 20.

MOSES H. CONE PAPERS

SERIES 23 APPLE ACCOUNT. 1912. 1 IN.

Lists of apple sales. Includes date of sale, to whom sold, amount sold, unit price, and total sale amount.
Arranged chronologically.
Box 21.

SERIES 24 BLUEPRINT OF BALUSTERED. 1913. 1 SHEET.
(CAT. NO. BLRI-8054)

"Plan and Details of Ballustered For Mrs. Moses H. Cone."
Drawn by N.M. Sullivan, Greensboro, NC. 30"x26" drawing.
Box 21.

SERIES 25 BLUEPRINT OF CONE MANOR HOUSE. 1913. 2 SHEETS.
(CAT. NO. BLRI-8055)

Blueprint of floor plan and cross section of Cone Manor House. Drawn by N.M. Sullivan, Proximity Manufacturing Co. 36"x24" drawing.
Box 21.

SERIES 26 PLAN AND SPECIFICATIONS FOR TROUT LAKE. 1899.
5 SHEETS. (CAT. NO. BLRI-8056)

Plan is hand drawn in pen. Specifications are typed. Drawn by J.T. Montgomery.
Box 21.

SERIES 27 NATIONAL APPLE SHOW DIPLOMA. 1908. 1 SHEET.
(CAT. NO. BLRI-8057)

First prize awarded to Moses H. Cone for exhibit of plate of Virginia Beauty Apples at the National Apple Show in Spokane, Washington, December 7-12, 1908.
Box 21.

SERIES 28 ME'DAILLE D'ARGENT. 1900. 1 SHEET.
(CAT. NO. BLRI-8058)

Awarded to Moses H. Cone at the Exposition Universelle De 1900 in Paris, France. Diploma inscribed in French.
Box 21.

SERIES 29 CERTIFICATE OF BRONZE MEDAL AWARD. 1904. 1 SHEET.
(CAT. NO. BLRI-8059)

Certificate presented to Moses H. Cone for apples by the International Jury at the Universal Exposition in Saint Louis.
Box 21.